

Results/tables of the 2021 FPSA

1. Financing Sources from government: central and decentralized/local levels

Financing Sources	Value (TJS)	Value (USD)	% of total
Central/Federal level			
Ministry of Finance (MoF)	20 984 689	1 857 052	100
Total	20 984 689	1 857 052	100

2. Family planning expenditures by financing agents

Financing Sources	Value (TJS)	Value (USD)	% of total
Central/Federal level			
Ministry of Health and Social Protection of the Population	20 984 689	1 857 052	100
Total	20 984 689	1 857 052	100

3. Family planning expenditures by provider type

Financing Sources	Value (TJS)	Value (USD)	% of total
Central/Federal level			
National Family Planning Agency	14 169 555	1 266 097	68
Public health centers	6 815 134	608 955	32
Total	20 984 689	1 857 052	100

4. Family Planning expenditures categories (FPSC)

Expenditure Categories	Amount in USD	
	Central/Federal	TOTAL
A - Service Delivery Category		
1 -Expenditure on staff providing FP services/Health Facilities (personnel)	1 627 024	1 627 024
2 – Service staff costs (for direct service provision) in mobile/community services settings/CBDs		
3 -Outsourcing of services		
4 - Contraceptives, medicine & other consumables		
IUD	15 486	15 486
Implants		
DMPA-IM (Depo Medroxyprogesterone Acetate Intra-Muscular)	41 700	41 700
Sayana Press – Depo Medroxyprogesterone Acetate Sub-Cutaneous (DMPA-SC)		
Pills		
Condoms (male and female)		
Lactational Amenorrhea Method (LAM)		
Long-acting method (sterilization)		
Others (Contraceptives/consumables not disaggregated by type)	2 513	2 513
B - Above-site level category		
Logistics/transportation of contraceptives etc.	21 008	21 008
Information, Education and Communication (IEC)		
Policy Development and Advocacy		
Management Information System (MIS) and Health Information System (HIS)		
Monitoring, Evaluation and Research		
Capacity building/training (for all categories mentioned above)		
Program Management	3 381	3 381
Operational expenditures (Expenditures that cannot be directly traced to the provision of a service; sometimes referred to as “overhead” or “indirect” costs, e.g., rent, utilities)	119 321	119 321
Others (please specify)	4 249	4 249
C - Capital (Medical & Non-medical Equipment, Construction and Renovation. ...)	22 370	22 370
GRAND TOTAL (A+B+C)	1 857 052	1 857 052

5. Flows of family planning service funds from government

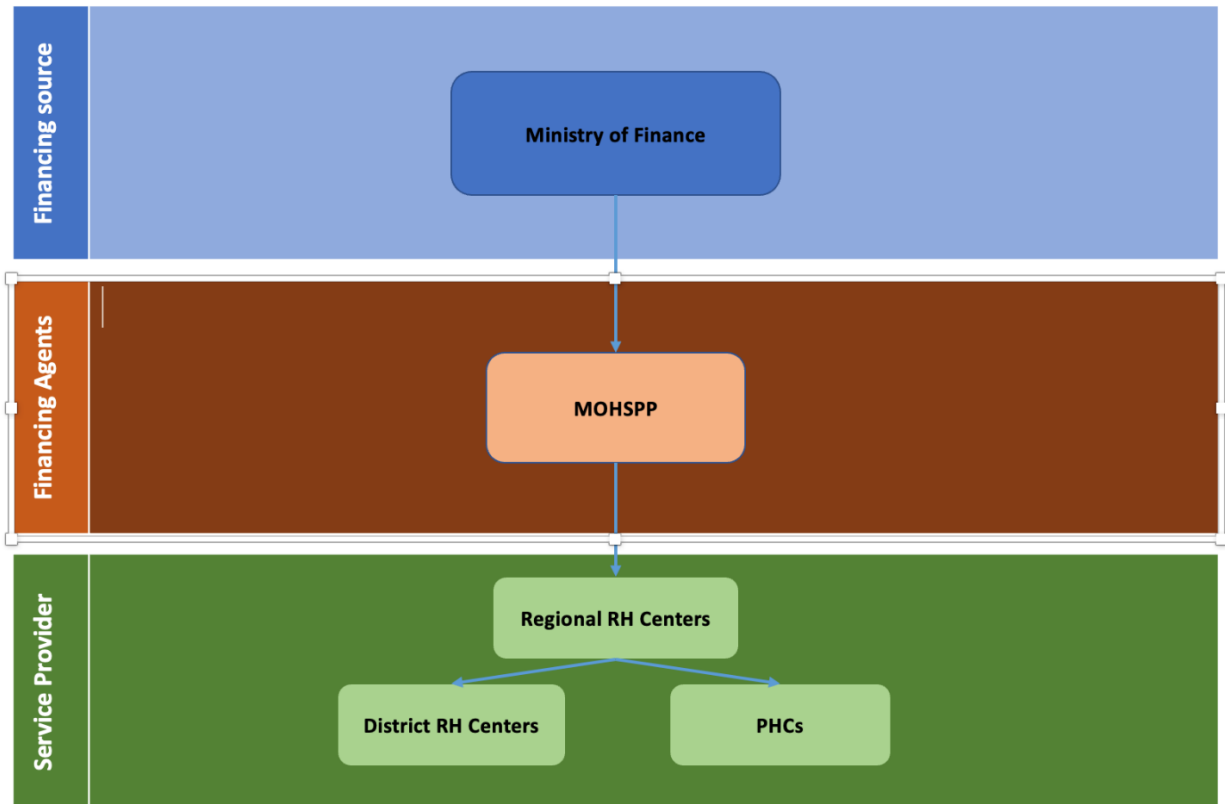


Figure 1: Flow of FP financing from the central government through lower levels in the health sector

Abbreviations

- MOHSP: Ministry of Health and Social Protection of Population
- RH: Reproductive Health
- PHC: Primary Health Care

6. Estimation Method - FP Shared Expenditures

Shared expenditures were estimated using the FPSA methodology.

- Outpatients = 55 802 741
- In-patient visits = 7 902 333
- Family planning = 10 931 554

Tajikistan equivalency ratio: 2.78

Inpatient to out-patient: $7\,902\,333 \times 2.78 = 21\,968\,486$

Total outpatient visits = 88 702 780

FP allocation ratio: $10\,931\,554 / 88\,702\,780 = 0.12$