

## Results/tables of the 2021 FPSA: Kyrgyz Republic

### 1. Financing Sources from government: central and decentralized/local levels

Financing Sources	Value (USD)	% of total
<b>Central/Federal level</b>		
Ministry of Health	932 727	7,37%
Mandatory Health Insurance Fund	11 724 240	92,63%
<b>Total</b>	<b>12 656 967</b>	<b>100%</b>

### 2. Family planning expenditures by financing agents

Financing Agents	Value (USD)	% of total
<b>Central/Federal level</b>		
Ministry of Health	932 727	7,37%
Procurement unit	71 795	0,57%
Reproductive Centers	860 933	6,80%
Mandatory Health Insurance Fund	11 724 240	92,63%
<b>Total</b>	<b>12 656 967</b>	<b>100%</b>

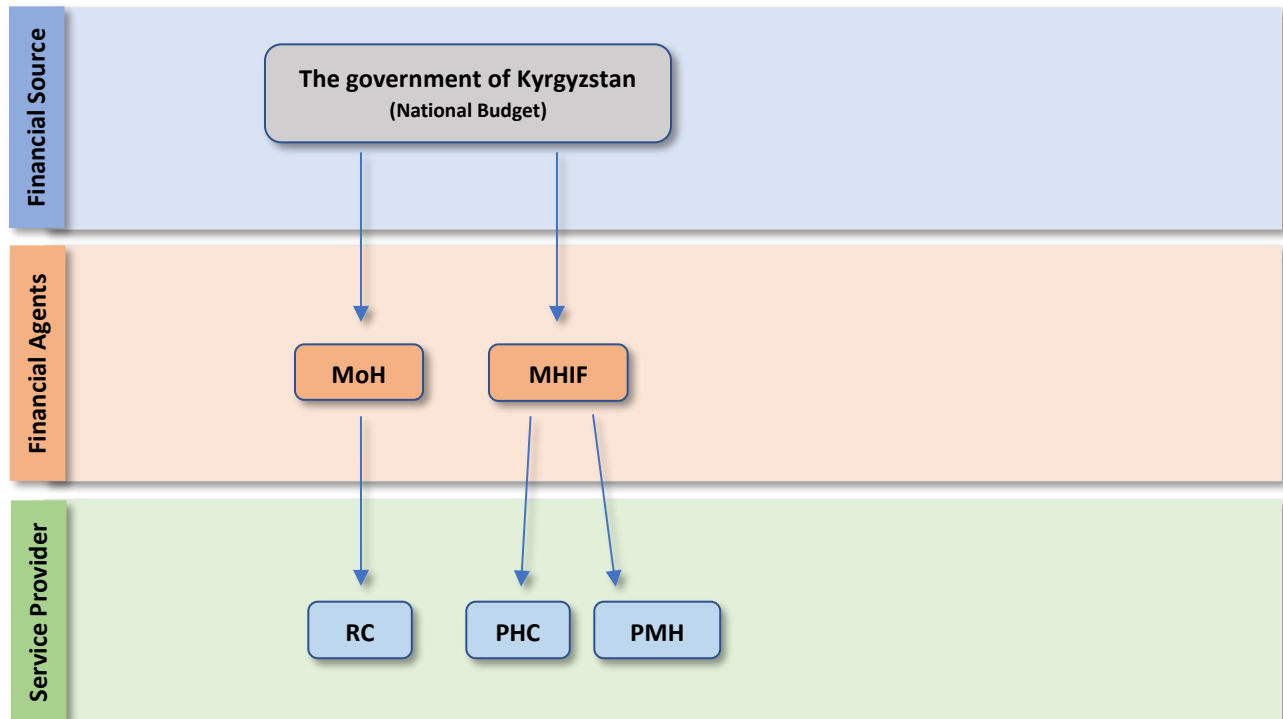
### 3. Family planning expenditures by provider type

Providers	Value (USD)	% of total
<b>Subnational Level 2</b>		
Reproductive Centers	453 119	3,58%
Public health centers & Public maternity hospitals	12 203 848	96,42%
<b>Total</b>	<b>12 656 967</b>	<b>100%</b>

## 4. Family Planning expenditures categories (FPSC)

Expenditure Categories	Amount in USD		
	Central/ Federal	Sub National	TOTAL
<b>A - Service Delivery Category</b>			
<b>1 -Expenditure on staff providing FP services/Health Facilities (personnel)</b>	\$1 265 697		\$1 265 697
<b>2 – Service staff costs (for direct service provision) in mobile/community services settings/CBDs</b>			
<b>3 -Outsourcing of services</b>			
<b>4 - Contraceptives, medicine &amp; other consumables</b>			
IUD			
Implants			
DMPA-IM (Depo Medroxyprogesterone Acetate Intra Muscular)			
Sayana Press – Depo Medroxyprogesterone Acetate Sub - Cutaneous (DMPA-SC)			
Pills	\$71 795		\$71 795
Condoms (male and female)			
Lactational Amenorrhea Method (LAM)			
Long acting method (sterilization)			
Others (Contraceptives/consumables not disaggregated by type)			
<b>B - Above-site level category</b>			
<b>Logistics/transportation of contraceptives etc.</b>			
<b>Information, Education and Communication (IEC)</b>			
<b>Policy Development and Advocacy</b>			
<b>Management Information System (MIS) and Health Information System (HIS)</b>			
<b>Monitoring, Evaluation and Research</b>			
<b>Capacity building/training (for all categories mentioned above)</b>			
<b>Program Management</b>			
<b>Operational expenditures</b> (Expenditures that cannot be directly traced to the provision of a service; sometimes referred to as “overhead” or “indirect” costs, e.g., rent, utilities)			
<b>Others</b> (Production factors not broken down by type)	\$11 319 476		\$11 319 476
<b>C - Capital (Medical &amp; Non-medical Equipment, Construction and Renovation. ...)</b>			
<b>GRAND TOTAL (A+B+C)</b>	<b>\$12 656 967</b>		<b>\$12 656 967</b>

## 5. Flows of family planning service funds from government



### Abbreviations

- MHIF = Mandatory Health Insurance Fund
- MoH = Ministry of Health
- RC = Reproductive Centers
- PHC = Public Health Centers
- PMH = Public Maternity Hospitals

## 6. Estimation Method - FP Shared Expenditures

1) Ministry of Health (MOH) expenditures for FP was taken from the MoH budget for 2021. In the MoH were introduced a budget line for mothers and children health, and inside of the budget line are two sub-lines for financing of reproductive centers (tertiary level) and for purchasing oral pills for FP, which were distributed through public health centers.

2) The Mandatory Health Insurance Fund (MHIF) provided information about expenditures for public health centers and public maternity hospitals.

### 3) Salaries for services:

- MoH data were taken from the MoH budget;
- MHIF provided about salaries of all medical personnel. The share of the salaries in the MHIF budget was extrapolated on amount of expenditures for public health centers and public maternity hospitals.
- We use the FPSA proposed methodology.
  - In-patients bed days 842,369
  - In-patients visits 204,990
  - Kyrgyz Republic equivalency ratio 2.91
  - Outpatient visits (including FP visits) 596,521<sup>1</sup>
  - Kyrgyz Republic FP allocation ratio is 6.0%

---

<sup>1</sup> The number of patients (see In-patient Out-patient.xls) was multiplied by Kyrgyz Republic equivalency ratio 2.91.