

## Results/tables of the 2021 FPSA

### 1. Financing Sources from government: central and decentralized/local levels

Financing Sources	Value (USD)	% of total
<b>Central Level</b>		
FS.1.1.1.1 Ministry (or equivalent sector entity) of Health	103.262,00	1,12%
FS.1.1.1.99 Central Government entities not elsewhere classified	7.267.651,14	78,61%
<b>Subnational Level</b>		
FS 1.1.2.99 State /provincial / regional entities n.e.c.	66.363,45	0,72%
FS 1.1.3.99 Local government entities nor elsewhere classified	1.807.514,65	19,55%
<b>Total (Central + Subnational)</b>	<b>9.244.791,25</b>	<b>100%</b>

### 2. Family planning expenditures by financing agents

Financing Agents	Value (USD)	% of total
<b>Central Level</b>		
FA 1.1.1.1 Ministry (or equivalent sector entity) of Health	116.717,18	1,26%
<b>Subnational Level</b>		
FA 1.1.2.99 State / provincial / regional entities not elsewhere classified	5.238.487,34	56,67%
FA 1.1.3.99 Other local/municipal entities not elsewhere classified (n.e.c.)	3.889.586,72	42,07%
<b>Total (Central + Subnational)</b>	<b>9.244.791,25</b>	<b>100%</b>

### 3. Family planning expenditures by provider type

Providers	Value (USD)	% of total
<b>Central Level</b>		
PS.1.13.2 Departments inside the Ministry of Health	116.717,19	1,26%
PS.1.99 Public providers not elsewhere classified	201.723,39	2,18%
<b>Subnational Level</b>		
PS.1.1.1 Public general hospitals	1.250.731,78	13,53%

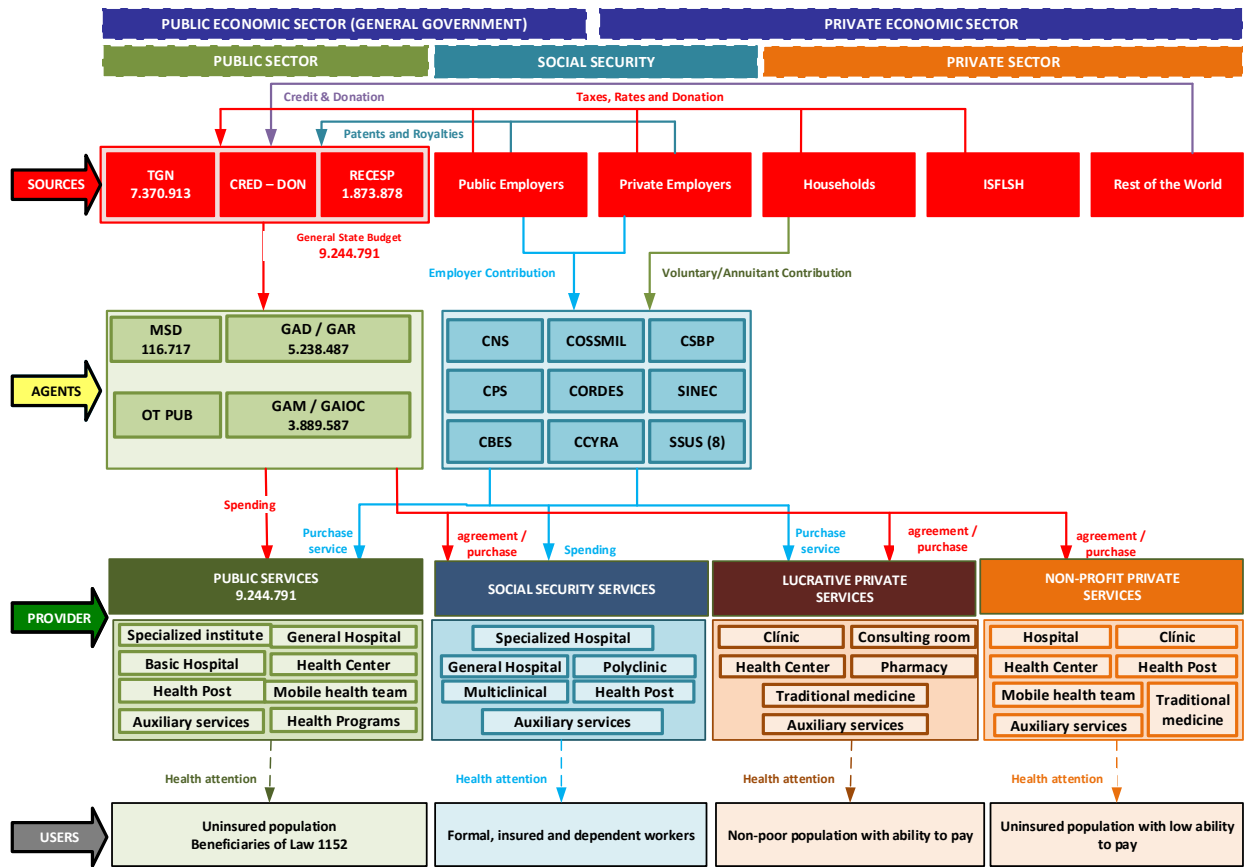
PS.1.1.2 Public specialty hospitals	211.514,73	2,29%
PS.1.2.1 Public health centers	6.372.226,64	68,93%
PS.1.2.2 Public health posts/ dispensaries	1.091.877,51	11,81%
<b>Total</b>	<b>9.244.791,25</b>	<b>100%</b>

#### 4. Family Planning expenditures categories (FPSC)

Expenditure Categories	Amount in USD		
	Central	Sub National Levels	TOTAL
<b>A - Service Delivery Category</b>			
<b>1 -Expenditure on staff providing FP services/Health Facilities (personnel)</b>		4.946.875,23	4.946.875,23
<b>2 – Service staff costs (for direct service provision) in mobile/community services settings/CBDs</b>			
<b>3 -Outsourcing of services</b>			
<b>4 - Contraceptives, medicine &amp; other consumables</b>			
IUD		2.4829,52	24.829,52
Implants		857.433,10	857.433,10
DMPA-IM (Depo Medroxyprogesterone Acetate Intra-muscular)		374.509,52	374.509,52
Sayana Press – Depo Medroxyprogesterone Acetate Sub-cutaneous (DMPA-SC)			
Pills		272.291,46	272.291,46
Condoms (male and female)	88.950,30	288.053,15	377.003,44
Lactational Amenorrhea Method (LAM)		1.674,82	1674,82
Long-acting method (sterilization)		90.916,35	909.16,35
Others (Contraceptives/consumables not disaggregated by type)		29.515,92	29.515,92
<b>B - Above-site level category</b>			
<b>Logistics/transportation of contraceptives etc.</b>	4.447,51	89.281,27	93.728,79
<b>Information, Education and Communication (IEC)</b>		275.664,40	275.664,40
<b>Policy Development and Advocacy</b>			
<b>Management Information System (MIS) and Health Information System (HIS)</b>			
<b>Monitoring, Evaluation and Research</b>	6.727,59	91.904,81	98.632,40
<b>Capacity building/training (for all categories mentioned above)</b>			
<b>Program Management</b>	16.591,78	67.417,02	84.008,80

<b>Operational expenditures</b> (Expenditures that cannot be directly traced to the provision of a service; sometimes referred to as "overhead" or "indirect" costs, e.g., rent, utilities)		1.717.707,49	1.717.707,49
<b>Others</b> (please specify)			
<b>C - Capital (Medical &amp; Non-medical Equipment, Construction and Renovation. ...)</b>			
<b>GRAND TOTAL (A+B+C)</b>	<b>116.717,18</b>	<b>9.128.074,07</b>	<b>9.244.791,25</b>

## 5. Flows of family planning service funds from government



### Abbreviations

- TGN = General Treasury of the Nation
- CRED = Loan
- DON = Grant
- RECESP = Specific Resources
- ISFLSH = Non-Profit Institutions at the Service of Households
- MSD = Ministry of Health and Sports
- GAD = Departmental Autonomous Government
- GAR = Regional Autonomous Government
- GAM = Municipal Autonomous Government
- GAIOC = Autonomous Indigenous Rural Government
- OT PUB = Other Public Institutions
- CNS = Caja Nacional de Salud
- COSSMIL = Military Social Security Corporation
- CSBP = Caja de Salud de la Banca Privada
- CPS = Caja Petrolera de Salud
- CORDES = Caja CORDES
- SINEC = Seguro Integral de Salud
- CBES = Caja de la Banca Estatal
- CCYRA = Caja de Caminos y Ramas Anexas
- SSU = University Social Security

## 6. Estimation Method - FP Shared Expenditures

### 6.1 Characteristics of the Study

The study includes the following characteristics:

- ✎ The methodology corresponds to a descriptive and quantitative ex post cross-sectional evaluation.
- ✎ The variables that were taken into account in the study correspond to the Reference Guide Methodology for estimating family planning expenses.
- ✎ To carry out the methodology, it was based on budget executions and on the survey of the flow of resources of public institutions at the central and departmental level. For which, a detailed follow-up was carried out: a) Origin of the funds and b) The way in which the funds are spent at the national and departmental level.
- ✎ Subsequently, for the estimation of the measurement, the real expenses classified according to the categories of expenses according to the guide were taken into account.

### 6.2 Delimitation

The study contemplated the following delimitations:

- ✎ **Temporary Delimitation.** The study covers the year 2021, it is important to mention that the analysis considers a calendar year, that is, from January 1 to December 31, as well as the point of view of consumption, according to its distribution in the analysis period.
- ✎ **Spatial Delimitation.** The study includes the following characteristics for its estimation: 1) Public Sector and Social Security, 2) National, Departmental and Municipal, 3) Public funds registered in the general state budget.

### 6.3 Processing

Given that the availability of information collected was heterogeneous in the different public institutions, three approaches were used to estimate spending on family planning: 1) Estimation of spending via budget executions, 2) Estimation of spending via costs, and 3) Estimation of spending via surveys.

**Estimation of spending on family planning via budget executions.** The estimation of the expenditure by this means consisted of the use of the administrative records and/or databases available and that correspond to the budgetary executions of each one of the public institutions that made some type of expense in activities related to family planning in Bolivia during the 2021. It is important to mention that there are two moments to apply this estimate:

- ✎ **First moment:** When the description and/or detail of the budget executions provided by the mapped institutions are clearly identified with the coding of the family planning expense and allow to identify "directly" both the funding body, the source of financing as well as the detail of the expense in activities inherent to family planning, this estimation methodology will be used. It is important to mention that in this instance "no assumption is used" to assign the coding of the methodological guide.
- ✎ **Second moment:** In the event that the activities described in the budget executions of the institutions involved with family planning are ambiguous or general, weights were used for their distribution in the different categories of expenditure.

Estimation of spending on family planning via cost. The estimation of family planning expenditure via cost required the use of service production data in activities related to family planning, as well as obtaining cost information for each of the activities and the institutions providing the service. To carry out this estimate, the care process flows were specified. Then the production indicators were used for each stage of the care process flow and finally the productivity data is multiplied with these average costs or costs per activity.

Estimation of spending on family planning via surveys and/or interviews. The estimation of spending on family planning via survey and/or interviews consisted of the use of a series of questions related to the study, as well as visits to institutions and key personnel.

**Family planning cost-sharing estimate:** The estimate of spending on family planning considers the equivalence ratio (WHO-CHOICE 2010) for Bolivia, which amounts to 3.39. For example, for a health center, the following are considered to obtain the assignment relationship.

- ✎ The number of general outpatient consultations is 9.562.697.
- ✎ Family planning visits number 608.300.
- ✎ The number of days of hospitalization is 151.530.

After calculation, the allocation ratio for a health center is 5.69%. This ratio is applied to the spending of institutions throughout the system that may contribute directly or indirectly to the supply of family planning services.

## Estimate of human resources in health facilities

Health Entities	General Hospitals	Hospitals Specialties	Health Centers	Health Posts
A. External consultation	1.742.993	393.974	9.562.697	1.731.803
B. Family Planning Consultations	86.533	14.333	608.300	107.410
C. Number of days of hospitalization	677.263	539.865	151.530	2.982
D. Equivalence Index (WHO-CHOICE 2010)	3,39	3,39	3,39	3,39
A. External consultation	1.742.993	393.974	9.562.697	1.731.803
B. Family Planning Consultations	86.533	14.333	608.300	107.410
E. Conversion days of Hospitalization (C x D)	2.297.397	1.831.319	514.017	10.115
F. Total equivalent outpatient visits (A+B+E)	4.126.923	2.239.626	10.685.014	1.849.328
G. FP Assignment Ratio (B/F)	2,10%	0,64%	5,69%	5,81%
<b>H. Number of health personnel related to FP (Average by type of establishment)</b>				
Nursing assistant	20	40	2	1
Bachelor of Nursing	12	35	1,5	
Doctor	8	20		
<b>I. Annual Expenditure in USD by type of personnel</b>				
Nursing assistant	8.773	8.773	8.773	8.773
Bachelor of Nursing	10.923	10.923	10.923	10.923
Doctor	15.872	15.872	15.872	15.872

J. Total expenditure in USD by type of staff (H x I)				
Nursing assistant	175.458	350.917	17.546	8.773
Bachelor of Nursing	131.081	382.318	16.385	
Doctor	126.976	317.439		
<b>K. Health establishments where FP services are performed</b>				
	79	13	1.849	1.118
<b>L. Total Spend in USD (J x K)</b>				
	34.247.645	13.658.762	62.738.230	9.808.117
<b>Total Family Planning Expenditure in USD (L x G)</b>				
	718.102	87.412	3.571.700	569.661

**4.946.875**

## Estimate of general expenses in health facilities

Health Establishments	General Hospitals	Specialty Hospitals	Health Centers	JobsHealth
A External consultations	1.742.993	393.974	9.562.697	1.731.803
B Family Planning Consultations	86.533	14.333	608.300	107.410
C Number of days of hospitalization	677.263	539.865	151.530	2.982
<b>D Equivalence Index (WHO-CHOICE 2010)</b>				
	3,39	3,39	3,39	3,39
A External consultations	1.742.993	393.974	9.562.697	1.731.803
B Family Planning Consultations	86.533	14.333	608.300	107.410
E Conversion days of hospitalization (C x D)	2.297.397	1.831.319	514.017	10.115
F Total equivalent outpatient visits (A+B+E)	4.126.923	2.239.626	10.685.014	1.849.328
<b>G FP allocation ratio (B/F)</b>				
	2,10%	0,64%	5,69%	5,81%
<b>H Health Facilities</b>				
	79	13	1.849	1.118
<b>I Average Annual Expenditure by type of establishment</b>				
	124.272	372.850	11.323	4.449
<b>J Total expenditure in USD (H x I)</b>				
	9.817.496	4.847.049	20.936.539	4.974.365
<b>Total Family Planning Expenditure in USD (J x G)</b>				
	205.852	31.020	1.191.921	288.914

**1.717.707**