

Results/tables of the 2021-2022¹ FPSA

1. Financing Sources from government: central and decentralized/local levels

Financing Sources	Value (USD)	% of total
Central/Federal level		
Ministry of Finance	7,960,108	100 %
Total	7,960,108	100 %

2. Family planning expenditures by financing agents

Financing Agents	Value (USD)	% of total
Central/Federal level		
FA 1.1.1.1 Ministry of Health	1, 731, 162	22 %
FA 1.1.2.6 State, Province, Department	1, 860, 983	23%
FA 1.1.3.1 Ministry of Health or equivalent local sector entity (JDWNRH)	4, 367, 963	55%
Total	7,960,108	100%

3. Family planning expenditures by provider type

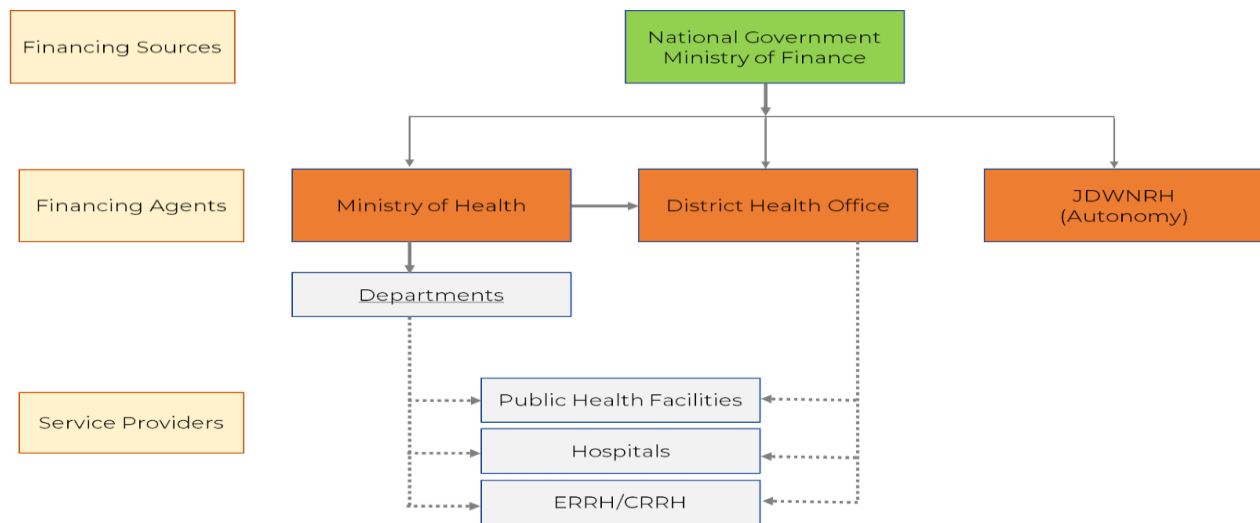
Providers	Value (USD)	% of total
Central/Federal level		
PS.1.1.1 Public general hospitals	1, 508, 828	19%
PS.1.2.1 Public health centers	590, 042	7 %
PS.1.1.2 Public specialty hospitals	5,662,275	71%
PS.1.13.2 Departments inside the Ministry of Health	198,963	3%
Total	7,960,108	100%

¹ July 2021-June 2022

4. Family Planning expenditures categories (FPSC)

Expenditure Categories	Amount in USD		
	Central/Federal	Sub National Levels	TOTAL
A - Service Delivery Category			
1 -Expenditure on staff providing FP services/Health Facilities (personnel)	4,538,520	1,443,652	5,982,172
2 – Service staff costs (for direct service provision) in mobile/community services settings/CBDs			
3 -Outsourcing of services			
4 - Contraceptives, medicine & other consumables			
IUD	1392	2017	3409
Implants			
DMPA-IM (Depo Medroxyprogesterone Acetate Intra-Muscular)	4792	58,495	63, 287
Sayana Press – Depo Medroxyprogesterone Acetate Sub- Cutaneous (DMPA-SC)			
Pills	835	15,939	16, 774
Condoms (male and female)	4044	66,719	70, 763
Lactational Amenorrhea Method (LAM)			
Long-acting method (sterilization)			
Others (Contraceptives/consumables not disaggregated by type)			
B - Above-site level category			
Logistics/transportation of contraceptives etc.			
Information, Education and Communication (IEC)	15,129	11,543	26, 671
Policy Development and Advocacy	64188	523	64, 711
Management Information System (MIS) and Health Information System (HIS)	4850	1948	6798
Monitoring, Evaluation and Research	17654	43,976	61, 631
Capacity building/training (for all categories mentioned above)	93,192	6011	99,203
Program Management	5188		5188
Operational expenditures (Expenditures that cannot be directly traced to the provision of a service; sometimes referred to as “overhead” or “indirect” costs, e.g., rent, utilities)	277,769	160,220	437, 989
Others (please specify)	1543	727	2270
C - Capital (Medical & Non-medical Equipment, Construction and Renovation. ...)	832,143	287,099	1, 119, 242
GRAND TOTAL (A+B+C)	5,861,238	2,098,870	7,960,108

5. Flows of family planning service funds from government



6. Estimation Method - FP Shared Expenditures

For the shared family planning expenditure, the equivalency ratio estimated for different countries by the WHO-CHOICE was used to determine allocation for the family planning. As a first step, all the items which were used in the health system but sensitive to the family planning services were identified. The identification and mapping of shared expenditures were carried out using the budget and expenditure report provided by the Ministry of Finance. From the Health Management and Information system, information such as outpatient, inpatient and family planning were collected. The inpatient days were converted to outpatient by multiplying equivalency ratio with the inpatient days. As a result, we added the actual outpatient, both the antenatal and postnatal care and equivalized inpatient days to determine the total outpatient days. For the family planning visit, we considered antenatal care visit and postnatal care visit since it has direct relationship with the family planning services. The family planning allocation for each health facility was estimated by dividing the total of antenatal and postnatal care by the total outpatient days. This family planning allocation was then multiplied with each shared family planning expenditure to apportion expenditure for family planning services.