

Family Planning Spending Assessment (FPSA) in Bangladesh 2021

1. Financing Sources from government: central and decentralized/local levels

Financing Sources	Value (USD)	% of total
Central/Federal level		
Ministry of Finance	202,016,764.9	100 %
Total	202,016,764.9	100 %

2. Family planning expenditures by financing agents

Financing Agents	Value (USD)	% of total
Central/Federal level		
DGFP	173970787.4	91.52%
FP Wing of MoHFW	15657429.6	4.68%
HED	3794422.1	1.48%
NIPORT	7367429.7	1.54%
BAVS	1226696.1	0.78%
Total	202,016,764.9	100.00%

3. Family planning expenditures by provider type

Providers	Value (USD)	% of total
Central/Federal level		
1. FP wing of MoHFW	15657429.6	4.68%
2. DGFP (Head Office)	54984150.2	34.10%
3. HED	3794422.1	1.48%
4. BAVS	1226696.1	0.78%
5. NIPORT	7367429.7	1.54%

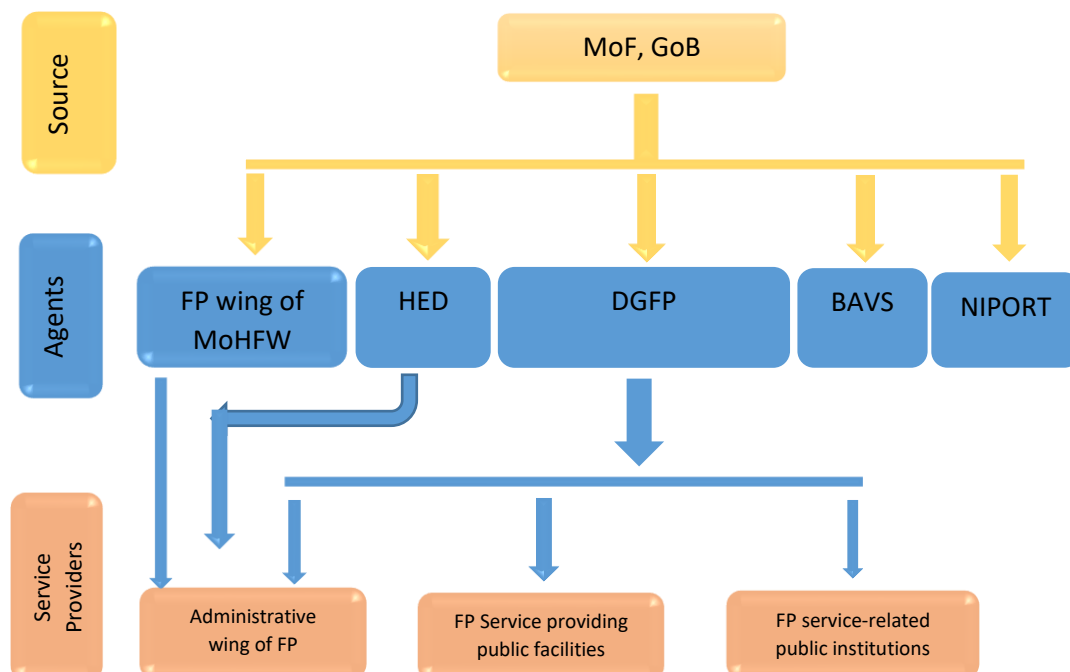
6. RPTI	211919	0.11%
7. MCHTI	489191.9	0.13%
8. MFSTC	406998	0.14%
Subnational level 1		
9. Divisional Director Office of FP	233505.6	0.11%
10. DDFP Office	6409094.4	2.82%
11. MCWC at district level	866643.9	0.59%
12. Others Hospital and Dispensaries	73554.2	1.09%
Subnational Level 2		
13. UFPO office	108281314.1	50.68%
14. Metro thana	2014416.1	1.75%
Total (Central+Sub-nationals)	202,016,764.9	100.00%

4. Family planning expenditures categories (FPSC)

Expenditure Categories	Amount (USD)	% of total
A - Service Delivery Category		
1 -Expenditure on staff providing FP services/Health Facilities (personnel)	130,397,359.7	64.55%
2 – Service staff costs (for direct service provision) in mobile/community services settings/CBDs	-	-
3 -Outsourcing of services	-	-
4 - Contraceptives, medicine & other consumables	22,622,354.4	11.20%
IUD	258272.2	0.13%
Implants	7822439.3	3.87%
DMPA-IM (Depo Medroxyprogesterone Acetate Intra Muscular)	-	-
Sayana Press – Depo Medroxyprogesterone Acetate Sub-Cutaneous (DMPA-SC)	-	-
Pills	7363822.7	3.65 %
Condoms (male and female)	2574889.5	1.27 %

Lactational Amenorrhea Method (LAM)	-	-
Long-acting method (sterilization)	219742.7	0.11%
Others (Contraceptives/consumables not disaggregated by type)	4383188	2.17%
B - Above-site level category		
Logistics/transportation of contraceptives etc.	9373092.5	4.64%
Information, Education and Communication (IEC)	3511171.7	1.74%
Policy Development and Advocacy	5279077.4	2.61 %
Management Information System (MIS) and Health Information System (HIS)	-	-
Monitoring, Evaluation and Research	2508311.3	1.25%
Capacity building/training (for all categories mentioned above)	4370083.7	2.16%
Program Management	6005401.4	2.97%
Operational expenditures (Expenditures that cannot be directly traced to the provision of a service; sometimes referred to as "overhead" or "indirect" costs, e.g., rent, utilities)	14944567.8	7.40 %
Others (please specify)		
C - Capital (Medical & Non-medical Equipment, Construction and Renovation. ...)	3005345	1.48%
GRAND TOTAL (A+B+C)	202,016,764.9	100.00%

5. Fund flows of family planning service from government



Abbreviations

- MoHFW: Ministry of Health and Family Welfare
- HED: Health Engineering Department
- DGFP: Directorate General of Family Planning
- BAVS: Bangladesh Association of Voluntary Sterilization
- NIPORT: National Institute of Population Research and Training

6. Estimation Method - FP Shared Expenditures

In Bangladesh, DGFP provides FP services comprehensively through FP Field Service Delivery Operation Plan. DGFP also provides FP services through Maternal and Child Welfare Center (MCWC) and Upazila Family Planning Office (UFPO) with maternal health, child health, reproductive health, nutrition services, etc. However, the issue of shared expenditure is applicable for both aspects.

To calculate FP shared expenditure of HR, we collected the time allocation data of each category of HR for FP activities from all types of entities. We estimated the average magnitude of the percentage of time given for FP services by each category of HR. Then we calculated the expenditure for FP activities of each category of HR by multiplying the estimated magnitude with their annual average salary and allowances. For calculating the shared office/ operation expenditure of family planning activities, we multiplied the total annual office expenses with the ratio of time allocation of HR used for calculating the shared expenditure of FP activities.

Notes:

- Figures in Bangladeshi currency (BDT) were converted to US\$ using the average Central Bank Rate (USD 1= 102.92 BDT. Source: Bangladesh Bank, December, 2022).

Annex

Table A1: Selected study sites

Sl.	Division	Selected District	Selected Upazila
1	Dhaka	Faridpur	Nagarkanda
2	Barishal	Patuakhali	Kalapara
3	Chattogram	Cox's Bazar	Teknaf
4	Khulna	Jhenaidah	Kaliganj
5	Mymensing	Jamalpur	Melandaha
6	Rajshahi	Pabna	Sujanagar
7	Rangpur	Nilphamari	Dimla
8	Sylhet	Sunamganj	Tahirpur

*Selection Criteria: Based on the median number of eligible couples, December 2021

**Data Source: MIS, DGFP, MOHFW

Table A2: List of FP facilities

National level study sites	Divisional level	District level (MCWC, DDFP)	Upazila Level	Metro Thana	Other Hospital and Dispensary
DGFP	Dhaka divisional FP office	Faridpur	Nagarkanda	-Tejgaon Metro thana - Mirpur metro thana -Tongi Metro thana	-Mohanagor FP Satellite Clinic, Basabo, Dhaka -Mohanagor FP Satellite Clinic, Basabo, Dhaka
FP Wing of MoHFW	Barishal divisional FP office	Patuakhali	Kalapara	-	-
HED	Chattogram divisional FP office	Cox's Bazar	Teknaf	-Double Moring Metro Thana, Chittogram - Pachlaish Metro Thana, Chittagong	-
BAVS	Khulna divisional FP office	Jhenaidah	Kaliganj	Khulna Sadar Metro Thana	FP monitoring Unit, Khulna
NIPORT	Mymensing divisional FP office	Jamalpur	Melandaha	-	-
FWVTI	Rajshahi divisional FP office	Pabna	Sujanagar	Boalia metho thana, rajshahi	FP Monitoring Unit, Rajshahi
MCHTI Azimpur	Rangpur divisional FP office	Nilphamari	Dimla	-	-
MCHTI Mirpur	Sylhet divisional FP office	Sunamganj	Tahirpur	-	-
MFSTC					