

## Results/tables of the 5 dimensions of the 2020 FPSA

### 1. Financing Sources from government: central and decentralized/local levels

Financing Source	Value (USD)	% of total
<b>Central level</b>		
Ministry of Finance (MoF) – National Budget	1 090 307	8,63%
Mandatory Health Insurance Fund (MHIF)	11 539 447	91,37%
<b>Total (Central + Subnational)</b>	<b>12 629 754</b>	<b>100%</b>

### 2. Family planning expenditures by financing agents in 2020

Financing Agents	Value (USD)	% of total
<b>Central level</b>		
Ministry of Health (MOH)	1 090 307	8,63%
- Procurement unit	67 270	0,53%
- Maternity hospitals	1 023 037	8,10%
Mandatory Health Insurance Fund (MHIF)	11 539 447	91,37%
<b>Total (Central + Subnational)</b>	<b>12 629 754</b>	<b>100%</b>

### 3. Family planning expenditures by provider type in 2020

Provider	Value (USD)	% of total
<b>Subnational/provincial level</b>		
Clinics	7 723 094,57	61,15%
Family doctors centers	3 425 189,28	27,12%
Maternity hospitals	185 657,38	1,47%
<b>Total (Central + Subnational)</b>	<b>12 629 754</b>	<b>100%</b>

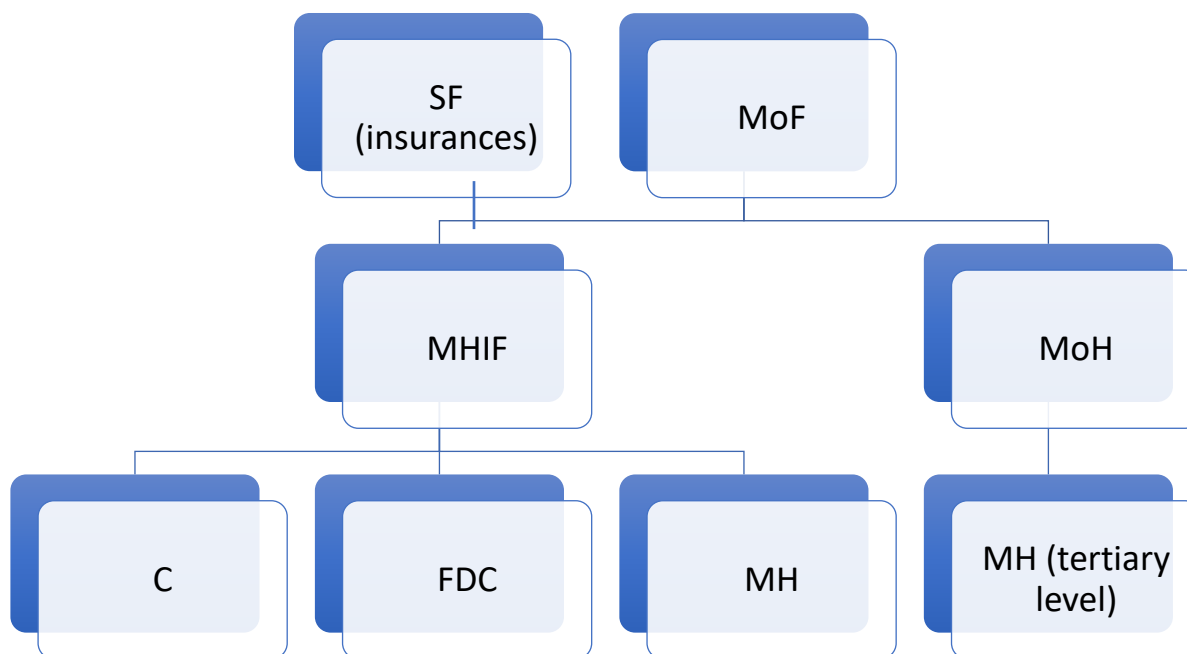
### 4. Family Planning Spending categories (FPSC) in 2020

Family Planning Spending Categories	Value (USD)	% of total
Salaries for services	1 262 975	10,00%
Provision of pills	67 270	0,53%
FP services not disaggregated by type (specify types of FP services included in the aggregate spending)	11 299 508	89,47%
<b>Total</b>	<b>12 629 754</b>	<b>100%</b>

## 5. Inputs/Production Factors/objects of expenditures in 2020

Family Planning Production Factors	Value (USD)	% of total
Staff cost not classified above	1 262 975	10,00%
Pills	67 270	0,53%
Production factors not broken down by type	11 299 508	89,47%
<b>Total</b>	<b>12 629 754</b>	<b>100%</b>

## 6. Fund flows for family planning service from government



- MoF = Ministry of Finance
- SF = Social Fund
- MoH = Ministry of Health
- MHIF = Mandatory Health Insurance Fund
- C = Clinics
- FDC = Family doctors centers
- MH = Maternity hospitals

**Data Collection Plan** <<<Concrete data collection schedule is under drafting>>>

Financial Source (Form 1)	Financial Agents (Form 1)	Service Providers (Form 2)
<b>National Government</b> Ministry of Finance Ministry of Health	<b>Ministry of Health (MOH)</b> <b>Mandatory Health Insurance Fund</b>	<b>Clinics</b> <b>Family doctors centers</b> <b>Maternity hospitals</b>
<b>\$1 090 307</b>	<b>\$12 629 754</b>	<b>\$12 629 754</b>

## 7. Estimation Method - FP Shared Expenditures

1) Ministry of Health (MOH) expenditures for FP was taken from the MoH budget on 2020. In the MoH were introduced a budget line for mothers and children health, and inside of the budget line are two sub-lines for financing of maternity hospitals (tertiary level) and for purchasing oral pills for FP.

2) The Mandatory Health Insurance Fund (MHIF) provided information about expenditures for clinics, family doctors centers and maternity hospitals.

3) Salaries for services:

- MoH data were taken from the MoH budget;
- MHIF provided about salaries of all medical personnel. The share of the salaries in the MHIF budget was extrapolated on amount of expenditures for clinics, family doctors centers and maternity hospitals.