

Results/tables of the 2019 FPSA (Federal Government Only)

1. Financing Sources from government: central and decentralized/local levels

Financing Sources	Value (USD)	% of total
Central/Federal level		
Federal Government of Nigeria	18 199 824	100
Total	18 199 824	100

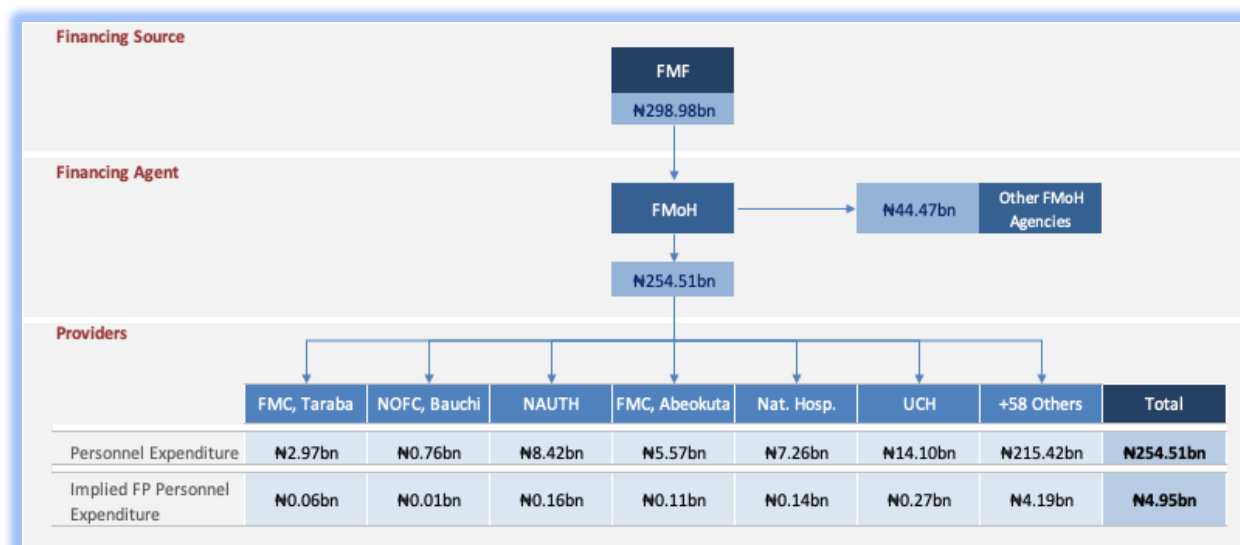
2. Family Planning expenditures categories (FPSC)

Expenditure Categories	Amount in USD		
	Central/Federal	Sub National Levels	TOTAL
A - Service Delivery Category			
1 -Expenditure on staff providing FP services/Health Facilities (personnel)	12,915,504		12,915,504
2 – Service staff costs (for direct service provision) in mobile/community services settings/CBDs			
3 -Outsourcing of services			
4 - Contraceptives, medicine & other consumables	1,948,746		1,948,746
<i>IUD</i>			
<i>Implants</i>			
<i>DMPA-IM (Depo Medroxyprogesterone Acetate Intra-Muscular)</i>			
<i>Sayana Press – Depo Medroxyprogesterone Acetate Sub-Cutaneous (DMPA-SC)</i>			
<i>Pills</i>			
<i>Condoms (male and female)</i>			
<i>Lactational Amenorrhea Method (LAM)</i>			
<i>Long acting method (sterilization)</i>			
<i>Others (Contraceptives/consumables not disaggregated by type)</i>			
B - Above-site level category			
Logistics/transportation of contraceptives etc.			
Information, Education and Communication (IEC)			
Policy Development and Advocacy			
Management Information System (MIS) and Health Information System (HIS)			
Monitoring, Evaluation and Research			
Capacity building/training (for all categories mentioned above)			

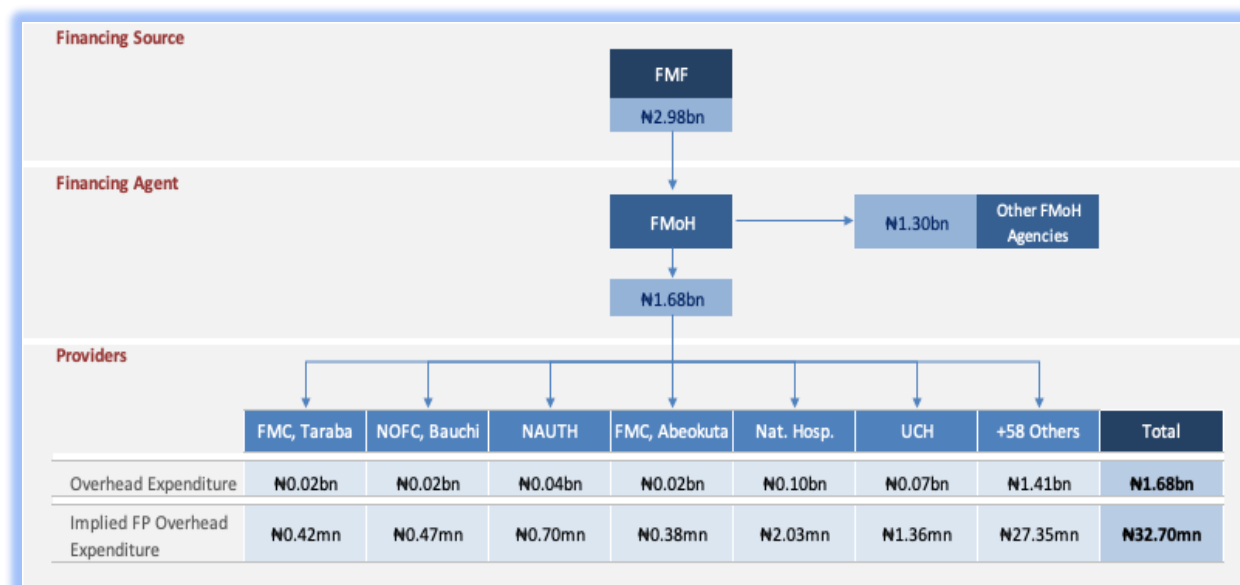
Program Management	3,228,876		3,228,876
Operational expenditures (Expenditures that cannot be directly traced to the provision of a service; sometimes referred to as “overhead” or “indirect” costs, e.g., rent, utilities)	106,698		106,698
Others (please specify)			
C - Capital (Medical & Non-medical Equipment, Construction and Renovation. ...)			
GRAND TOTAL (A+B+C)	18,199,824		18,199,824

3. Flows of family planning service funds from government

a. Flow of FP Funds: Personnel Cost



b. Flow of FP Funds: Overhead



4. Estimation Method - FP Shared Expenditures

	Total
General minus inpatients day	150,334,776
Out-patient Attendance	52,729,721
Inpatient ->Outpatient vists	24,156,601
FP visits	4,417,766
FP allocation ratio - Nigeria	1.94%

Data Sources

Data were provided by the Nigerian Bureau of Statistics (NBS)

Year	Description	File Name
2019	Personnel Expenditure	Personnel and Overhead Expenditure.xls
2019	Overhead Expenditure	Personnel and Overhead Expenditure.xls
2019	Contraceptives budget	UNFPA Estimates