

## Results/tables of the 2021 FPSA in Laos

### 1. Family Planning Expenditure by Financing Source

The government financing from national budget distributed by Ministry of Finance (MOF) has shown a significant role in family planning program, accounted around 87.7 percent from total FP expenditure in 2021 (including co-financing contraceptive and non-contraceptive devices) and the FP spending from loan accounted around 9.3 percent. The study also finds that there is a small contribution from MOH's technical revenue, accounted at 3.0 percent from government support.

Table 1. Financing Sources from government: central and decentralized/local levels

Financing Source	Value (USD)	% of total
<b>Central level</b>		
Ministry of Finance (MOF) – National budget	\$661,819	87.7%
Ministry of Health (MOH) – Technical revenue	\$22,361	3.0%
World Bank (Loan)	\$69,902	9.3%
<b>Subnational/provincial level</b>		
	-	-
	-	-
	-	-
<b>Total (Central + Subnational)</b>	<b>\$754,082</b>	<b>100.0%</b>

### 2. Family planning expenditures by financing agents

Financing agents refer to entities that manage and use the funds for disbursement or purchase of FP services, FP commodities and other FP related activities. Financing agents also describe how much the government funds to be spent on what items or spending categories of FP service provision. The results show that MOH central level is the key financing agent for the provision of FP services in Laos. Almost 64.4 percent of the total government's FP expenditure are managed by MOH central level, followed by MOH's subnational level, namely provincial health offices (PHO) and provincial hospitals, accounted 21.9 percent, while Ministry of Education and Sport (MoES), the Lao Women's Union, and Central Public Hospitals managed the rest around 10.8 percent.

Table 2. Family planning expenditures by financing agents

Financing Agents	Value (USD)	% of total
<b>Central level</b>		
Ministry of Health (MOH)*	\$485,475	64.4%
Ministry of Education and Sport (MoES)	\$37,078	4.9%
Lao Women's Union	\$33,375	4.4%
Lao Youth's Union	\$11,567	1.5%
<b>Subnational/provincial level</b>		
Provincial Health Office (PHO)**	\$161,166	21.9%
Provincial Education and Sport Office (PESO)***	\$21,421	2.8%
<b>Total (Central + Subnational)</b>	<b>\$754,082</b>	<b>100.0%</b>

\* Including 4 central hospital in Vientiane Capital ((Settathirath, Mittaphab, Mater and Child and Mohosot hospitals).

\*\* Including Vientiane capital health office and provincial hospitals (Vientiane, Bolikhamxay, Xienghouang provincial hospitals) as well as Nursing College in Vientiane province.

\*\*\* Mainly secondary school in Vientiane, Bolikhamxay and Xiengkhouang provinces.

### 3. Family planning expenditures by provider type

Service providers are entities or units that directly engage in the production, provision and delivery of family planning services against a payment for their contributions. Family planning services and interventions are provided by a number of providers, including the public institutions, private for profit and non-profit domestic and international organizations. Table 3 demonstrates the FP spending by service providers in 2021. Department of Hygiene and Health Promotion (DHHP) plays a significant role in providing FP services in Laos (mainly come from co-financing for contraceptive and non-contraceptive devices), accounted for the highest spending at 27.8 percent; followed by Maternal and Child Health Center - the National Family Planning Entity - (the expenditure mainly come from program management and operational expenditure), which accounted for 11.6 percent. While the Food and Drug Department accounted for the FP spending around 8.9 percent and other agencies from both national and subnational levels have minor contributions.

Table 3. Family planning expenditures by provider type

Provider	Value (USD)	% of total
<b>Central level</b>	<b>\$567,495</b>	<b>75.3%</b>
<b>Ministry of Health (MOH)</b>	<b>\$468,925</b>	
- Department of Hygiene and Health Promotion (DHHP)	\$209,821	27.8%
- Department of Health Professional and Education (DHPE)	\$6,940	0.9%
- Department of Planning and International Cooperation (DPIC)	\$14,225	1.9%
- Department of Food and Drug (FDD)	\$66,900	8.9%
- Maternal and Child Health Center (MCHC)	\$87,114	11.6%
- Medical Product and Supply Center (MPSC)	\$19,683	2.6%
- Mittapharb hospital	\$12,854	2.4%
- Settha hospital	\$19,967	3.3%
- Mahosot hospital	\$14,054	2.3%
- Maternal and Child hospital	\$17,367	2.8%
<b>Ministry of Education and Sport (MoES)</b>	<b>\$37,078</b>	
- Department of General Education	\$14,831	2.0%
- Department of Higher Education	\$22,247	3.0%
<b>Lao Women's Union</b>	<b>\$33,375</b>	
- Lao Women's Union	\$18,580	2.5%
- Vientiane Youth Center	\$14,795	2.0%
<b>Lao Youth's Union</b>	<b>\$11,567</b>	
- Lao Youth Union	\$11,567	1.5%
<b>Subnational/provincial level</b>	<b>\$186,587</b>	<b>24.7%</b>
<b>Provincial Health Office (PHO)</b>		
- Bolikhamxay PHO	\$26,426	3.5%
- Bolikhamxay hospital	\$21,580	2.9%
- Vientiane capital PHO	\$24,204	2.6%
- Vientiane PHO	\$19,451	1.2%
- Vientiane hospital	\$9,254	2.8%
- Vientiane provincial nursing college	\$21,354	3.2%
- Xiengkhouang PHO	\$24,507	3.2%
- Xiengkhouang hospital	\$18,490	2.5%
<b>Provincial Education and Sport Office</b>		
- Vientiane Provincial Secondary School	\$4,627	0.6%
- Bolikhamxay Provincial Secondary School	\$6,940	1.3%
- Xiengkhouang Provincial Secondary School	\$9,854	0.9%
<b>Total (Central + Subnational)</b>	<b>\$754,082</b>	<b>100.0%</b>

#### 4. Family Planning expenditures categories (FPSC)

The study classifies total expenditure into service categories or activities which includes 1) expenditure on staff providing FP services; 2) contraceptives, medicine & other consumables; 3) operational expenditures (program management and administration; human resource; advocacy and M&E; information, education and communication; management information system and health information system; logistics/transportation of contraceptives and etc. and 4) capital expenditure (medical & non-medical equipment, construction and renovation, and etc.). Table 4 shows the finding of total expenditures under these service categories. The finding shows that expenditure on staff providing FP services (personnel) constituted the highest expenditure at 51.2 percent of total FP spending, followed by procurement of contraceptives, medicine & other consumables accounted for 25,1 percent; programme monitoring and evaluation at 6.1 percent; Capacity building/training at 6.4 percent; drug supply system (Logistics/transportation of contraceptives ) at 3.0 percent; and others at 6.7%.

Table 4. Family Planning expenditures categories

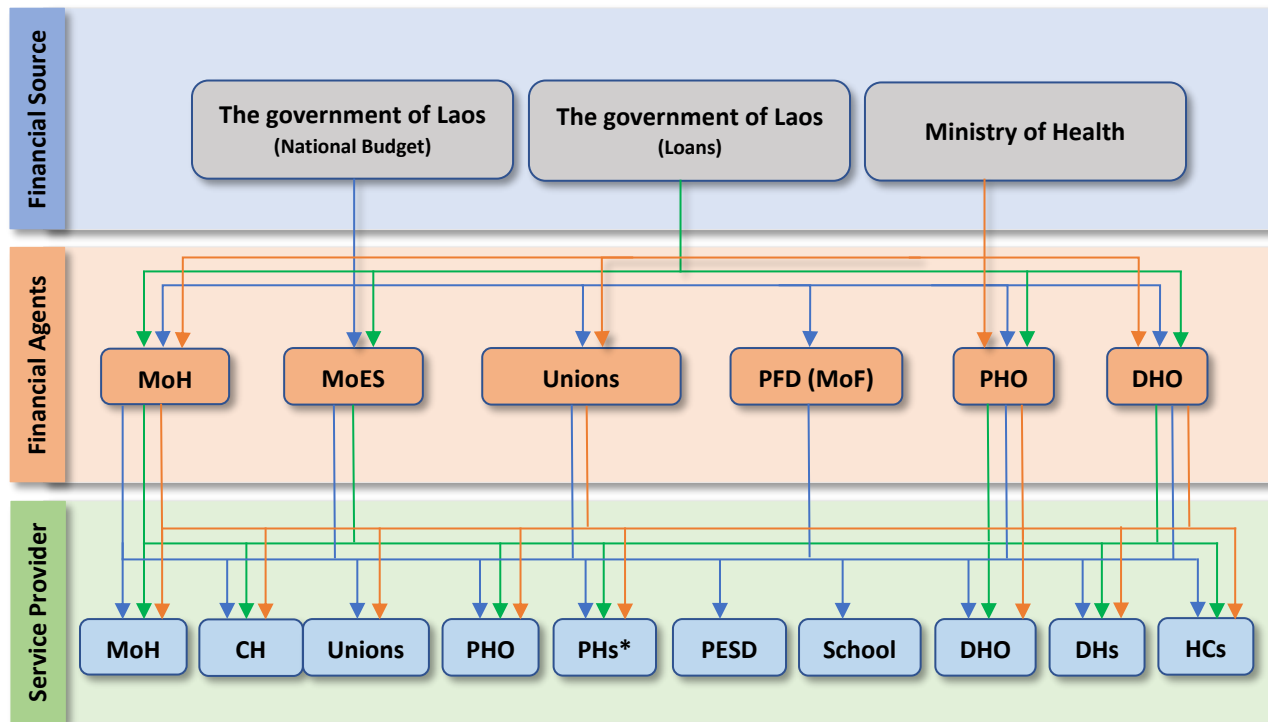
Service Delivery Category	Amount (USD)	% of total
<b>Expenditure on staff providing FP services (personnel)</b>	\$386,200	51.2%
<b>Service staff costs (for direct service provision) in mobile/community services settings</b>	-	-
<b>Outsourcing of services</b>	-	-
<b>Contraceptives, medicine &amp; other consumables</b>		
<i>IUD</i>	-	-
<i>Implants</i>	\$54,000	7.2%
<i>DMPA-IM (Depo Medroxyprogesterone Acetate Intra-Muscular)</i>	\$135,000	17.9%
<i>Sayana Press - Depo Medroxyprogesterone Acetate Sub -Cutaneous (DMPA-SC)</i>	-	-
<i>Pills</i>	-	-
<i>Condoms (male and female)</i>	-	-
<i>Lactational Amenorrhea Method (LAM)</i>	-	-
<i>Long-acting method (sterilization)</i>	-	-
<i>Others (Contraceptives/consumables not disaggregated by type)</i>	\$12,127	1.6%
<b>Above-site level category</b>		
<b>Logistics/transportation of contraceptives etc.</b>	\$22,306	3.0%

<b>Information, Education and Communication (IEC)</b>	\$1,500	0.2%
<b>Policy Development and Advocacy</b>	\$14,100	1.9%
<b>Management Information System (MIS) and Health Information System (HIS)</b>	\$5,000	0.7%
<b>Monitoring, Evaluation and Research</b>	\$45,703	6.1%
<b>Capacity building/training</b> (for all categories mentioned above)	\$48,570	6.4%
<b>Program Management</b>	\$13,086	1.7%
<b>Operational expenditures</b> (Expenditures that cannot be directly traced to the provision of a service; sometimes referred to as “overhead” or “indirect” costs, e.g., rent, utilities)	\$16,490	2.2%
<b>Others</b> (please specify)		
<b>Capital (medical &amp; non-medical equipment, construction &amp; renovation, ...)</b>	-	-
<b>Total</b>	<b>\$754,082</b>	<b>100.0%</b>

## 5. Fund flows for family planning service from government

Financing of family planning commodities and activities are commenced by different stakeholders. The stakeholders comprise of sources of funds, financing agents, and service providers of family planning. Figure 1 shows diagrammatic arrangement of the flow of family planning funds from central, provincial, district, to the service provider for family planning program under the government financing. In 2021, the main three financial sources are national budget, concessional loan from the World Bank and technical revenue from Ministry of Health. Furthermore, the key financial agents of the government funds for provision of family planning services are Ministry of Health (Department of Hygiene and Health Promotion, Maternal and Child Health Center, Food and Drug Department, Medical Product and Supply Center), Ministry of Education and Sport (Department of General Education, Department Nonformal Education), the Lao Women’s Union (Vientiane Youth Center), Provincial Health Offices (PHO), and District Health Offices (DHO). The key service provider of FP program includes MCHC, central public hospitals, Vientiane Youth Center, public secondary and high school, PHO, DHO, provincial hospitals, district hospital, and health center.

Figure 1. Flow of Funds for family planning program



**Abbreviations**

- MoF = Ministry of Finance
- MoH = Ministry of Health
- MoES = Ministry of Education and Sport
- PFD = Provincial Finance Department
- PHO = Provincial Health Office
- DHO = District Health Office
- CH = Central Hospital
- PESD = Provincial Education and Sport Department
- HC = Health Center

## 6. Estimation Method - FP Shared Expenditures in 2021

Description	Total:
<b>Human Resource Expenditure</b>	
- Personnel expenditure	\$386,200
- Operational expenditure	\$367,882
<b>Total</b>	<b>\$754,082</b>
<b>Patient Visits**</b>	
- General outpatient visit	5,377,442
- MCH outpatient visit	1,134,079
- FP visit	522,020
- Inpatient (bed) days	1,189,805
<b>The equivalency ratio (Laos)*</b>	<b>2.98</b>
Convert the inpatient bed days into outpatient visits: (Outpatient visits = inpatient bed days x equivalency)	
- Outpatient visits	3,843,619
Total outpatient visits = General outpatient visit + MCHC outpatient visit + FP visit + Inpatient (bed) days	10,877,160
The FP allocation ratio (FP visit/ Total outpatient visits)	0.0480 or (4,80%)
<b>FP-specific expenditures</b>	
- Personnel expenditure * FP allocation ratio	\$18,535
- Operational expenditure * FP allocation ratio	\$17,656
<b>Total FP expenditures</b>	<b>\$36,190</b>

\*\*Source: DHIS2, Ministry of Health, Lao PDR.