

Results/tables of the 2021 FPSA in The Gambia

1. Financing Sources from government: central and decentralized/local levels

Financing Source	Value (USD)	% of total
Central level		
Ministry (or equivalent sector entity) of Finance	525,126	100%
Total	525,126	100%

2. Family planning expenditures by financing agents

Financing Agents	Value (USD)	% of total
Central level		
Ministry (or equivalent sector entity) of Health (MOH)	525,126	100%
Total	525,126	100%

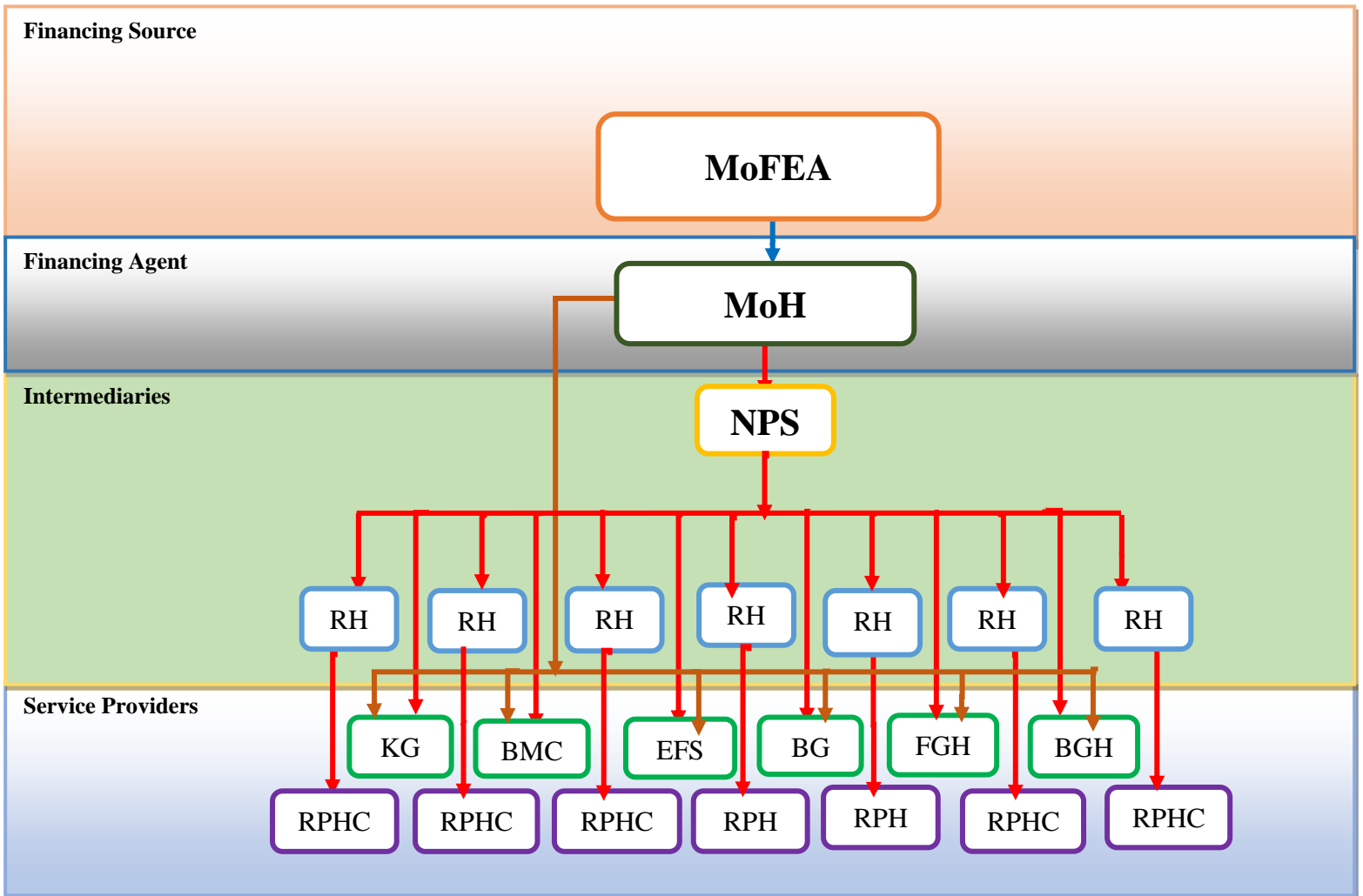
3. Family planning expenditures by provider type

Provider	Value (USD)	% of total
Central level		
Public General Hospitals	96,379	18%
Subnational/provincial level		
Public Health Centers	428,747	82%
Total (Central + Subnational)	525,126	100%

4. Family Planning expenditures categories (FPSC)

	Amount (USD)	% of total
Service Delivery Category		
Expenditure on staff providing FP services (personnel)	168,762	32%
Service staff costs (for direct service provision) in mobile/community services settings		
Outsourcing of services	0	
Contraceptives, medicine & other consumables		
<i>IUD</i>	0	
<i>Implants</i>	0	
<i>DMPA-IM (Depo Medroxyprogesterone Acetate Intra-Muscular)</i>	0	
<i>Sayana Press - Depo Medroxyprogesterone Acetate Sub - Cutaneous (DMPA-SC)</i>	0	
<i>Pills</i>	0	
<i>Condoms (male and female)</i>	0	
<i>Lactational Amenorrhea Method (LAM)</i>	0	
<i>Long-acting method (sterilization)</i>	0	
<i>Others (Contraceptives/consumables not disaggregated by type)</i>	0	
Above-site level category		
Logistics/transportation of contraceptives etc.	1,976	0%
Information, Education and Communication (IEC)	724	0%
Policy Development and Advocacy		
Management Information System (MIS) and Health Information System (HIS)		
Monitoring, Evaluation and Research	2,230	0%
Capacity building/training (for all categories mentioned above)	4,990	1%
Program Management		
Operational expenditures (Expenditures that cannot be directly traced to the provision of a service; sometimes referred to as "overhead" or "indirect" costs, e.g., rent, utilities)	346,125	66%
Others (please specify)		
Capital (medical & non-medica equipment, construction & renovation, ...)		
Total	525,126	100%

5. Fund flows for family planning service from government



Abbreviations

Note:

- MoFEA = Ministry of Finance and Economic Affairs
- MoH = Ministry of Health
- KGH = Kanifing General Hospital
- BMCH = Bundung Maternal Children Health
- EFSTH = Edward Francis Small Teaching Hospital
- BGH = Bwiam General Hospital
- FGH = Farafenni General Hospital
- BGH = Bansang General Hospital
- NPS = National Pharmaceutical Service
- RHDs = Regional Health Directorates
- RPHCs = Regional Public Health Centres