

Results/tables of the 2021 FPSA in Djibouti

1. Financing Sources from government: central and decentralized/local levels

Financing Source	Value (USD)	% of total
Ministry of Finance (MoF)	\$89,455.9	100%
Total	\$89,455.9	100%

2. Family planning expenditures by financing agents

Financing Agents	Value (USD)	% of total
Ministry of Health (MOH)	\$89,455.9	100%
Total	\$89,455.9	100%

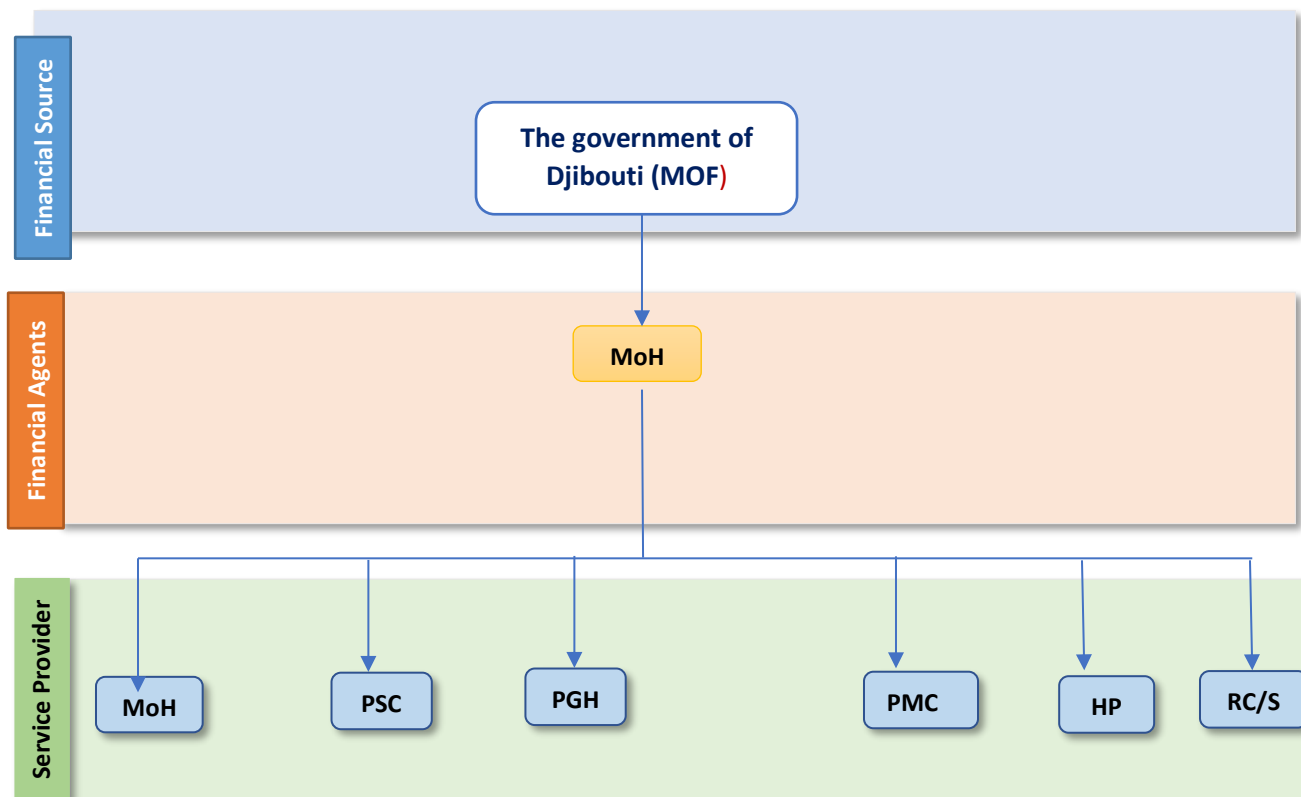
3. Family planning expenditures by provider type

Provider	Value (USD)	% of total
Central level		
Ministry of Health (MOH)	\$8,945.59	10%
Subnational/provincial level		
Public Specialized Center	\$2,845.47	3.2%
Public Regional Hospital	\$9,585.89	10.7%
Public Medical centers	\$62,010.02	69.3%
Public health posts	\$5,047.51	5.6%
Refugee camps/shelters	\$1,021.37	1.1%
Total (Central + Subnational)	\$89,455.9	100%

4. Family Planning expenditures categories (FPSC)

Service Delivery Category	Amount (USD)	% of total
Expenditure on staff providing FP services (personnel)	\$79,488.90	88.9%
Service staff costs (for direct service provision) in mobile/community services settings	\$1,021.37	1.1%
Outsourcing of services		
Contraceptives, medicine & other consumables		
<i>IUD</i>		
<i>Implants</i>		
<i>DMPA-IM (Depo Medroxyprogesterone Acetate Intra-Muscular)</i>		
<i>Sayana Press - Depo Medroxyprogesterone Acetate Sub - Cutaneous (DMPA-SC)</i>		
<i>Pills</i>		
<i>Condoms (male and female)</i>		
<i>Lactational Amenorrhea Method (LAM)</i>		
<i>Long-acting method (sterilization)</i>		
<i>Others (Contraceptives/consumables not disaggregated by type)</i>		
Above-site level category		
Logistics/transportation of contraceptives etc.		
Information, Education and Communication (IEC)		
Policy Development and Advocacy		
Management Information System (MIS) and Health Information System (HIS)		
Monitoring, Evaluation and Research		
Capacity building/training (for all categories mentioned above)		
Program Management	\$8,945.59	10%
Operational expenditures (Expenditures that cannot be directly traced to the provision of a service; sometimes referred to as "overhead" or "indirect" costs, e.g., rent, utilities)		
Others (please specify)		
Capital (medical & non-medica equipment, construction & renovation, ...)		
Total	\$89,455.9	100%

5. Fund flows for family planning service from government



Note:

- MoF = Ministry of Finance
- MoH = Ministry of Health
- PSC = Public Specialized Center
- PGH = Public General Hospital
- PMC = Public Medical Center
- HP = Health Post
- Rc/S = Refugee camps/shelters

6. Estimation Method - FP Shared Expenditures

Service statistics

Out Patient visits including FP	203598
In Patient visit	32370
Average Bed Days	7.4
Inpatient days	239538
Equivalency ratio- Djibouti	2.79
IP -OP equivalent	682,787
Total OP equivalent	871909
FP visits	25,776
FP %	3%

Estimation of /assumption for Shared expenditure by Provider type

FP Providers	% Percentage
Public Specialized Center	3.53%
Public Regional Hospital	11.91%
Public Medical centers	77.02%
Public health posts	6.27%
Refugee camps/shelters	1.27%