

Results/tables of the 5 dimensions of the 2020 FPSC

1. Financing Sources from government: central and decentralized/local levels

Financing Source	Value (USD)	% of total
Central level		
Ministry of Finance (MoF) – National Budget	\$1 090 306,98	17,61%
Mandatory Health Insurance Fund (MHIF)	\$5 101 332,5	82,39%
Total (Central + Subnational)	\$1 090 306,98	100%

2. Family planning expenditures by financing agents in 2020

Financing Agents	Value (USD)	% of total
Central level		
Ministry of Health (MOH)	\$1 090 306,98	17,61%
- Procurement unit	\$67 270,38	1,09%
- Maternity hospitals	\$1 023 036,61	16,52%
Mandatory Health Insurance Fund (MHIF)	\$5 101 332,52	82,39%
Total (Central + Subnational)	\$6 191 639,50	100%

3. Family planning expenditures by provider type in 2020

Provider	Value (USD)	% of total
Subnational/provincial level		
Clinics	\$3 300 282,04	53,30%
Family doctors centers	\$1 508 048,42	24,36%
Maternity hospitals	\$1 383 309,04	22,34%
Total (Central + Subnational)	\$6 191 639,50	100%

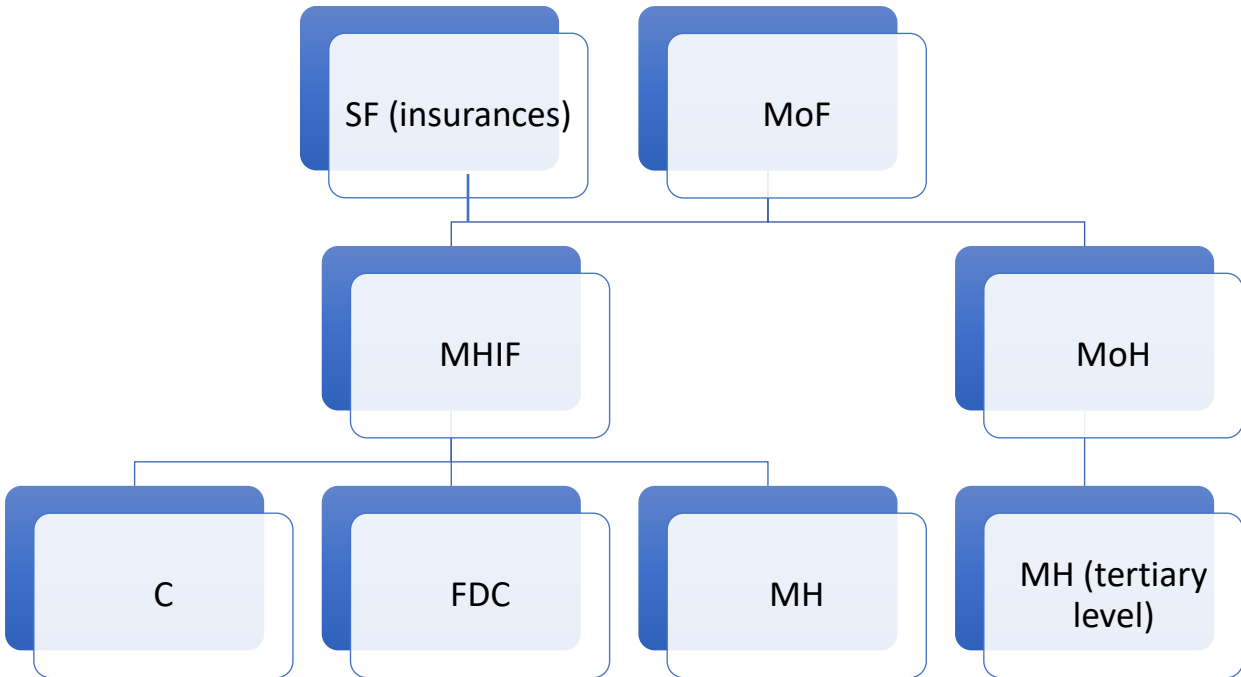
4. Family Planning Spending categories (FPSC) in 2020

Family Planning Spending Categories	Value (USD)	% of total
Salaries for services	\$1 064 038,76	17,19%
Provision of pills	\$67 270,38	1,09%
FP services not disaggregated by type (specify types of FP services included in the aggregate spending)	\$5 060 330,37	81,73%
Total	\$6 191 639,50	100%

5. Inputs/Production Factors/objects of expenditures in 2020

Family Planning Production Factors	Value (USD)	% of total
Staff cost not classified above	\$1 064 038,76	17,19%
Pills	\$67 270,38	1,09%
Production factors not broken down by type	\$5 060 330,37	81,73%
Total	\$6 191 639,50	100%

6. Fund flows for family planning service from government



- MoF = Ministry of Finance
- SF = Social Fund
- MoH = Ministry of Health
- MHIF = Mandatory Health Insurance Fund
- C = Clinics
- FDC = Family doctors centers
- MH = Maternity hospitals

Data Collection Plan <<<Concrete data collection schedule is under drafting>>>

Financial Source (Form 1)	Financial Agents (Form 1)	Service Providers (Form 2)
National Government Ministry of Finance Ministry of Health	Ministry of Health (MOH) Mandatory Health Insurance Fund	Clinics Family doctors centers Maternity hospitals
\$1 090 306,98	\$5 101 332,52	\$6 191 639,50

7. Estimation Method - FP Shared Expenditures

1) Ministry of Health (MOH) expenditures for FP was taken from the MoH budget on 2020. In the MoH were introduced a budget line for mothers and children health, and inside of the budget line are two sub-lines for financing of maternity hospitals (tertiary level) and for purchasing oral pills for FP. The

2) Mandatory Health Insurance Fund (MHIF) provided information about expenditures for clinics, family doctors centers and maternity hospitals.

3) Salaries for services:

- MoH data were taken from the MoH budget;
- MHIF provided about salaries of all medical personnel. The share of the salaries in the MHIF budget was extrapolated on amount of expenditures for clinics, family doctors centers and maternity hospitals.