

Results of the 2020 FPSA in Indonesia

1. Financing sources from government: central and local

No.	Financing Source (FS)	Value (USD)	% of Total
Other ministries (or equivalent sector entities)*			
1	National Population & Family Planning Board/BKKBN	84,749.30	0.02%
Ministry of Health			
2	Ministry of Health	2,169,693.58	0.61%
Ministry Finance			
3	Ministry of Finance	350,732,593.64	98.67%
Province			
4	National Population & Family Planning Board/BKKBN Jawa Tengah	114,031.05	0.03%
5	Government of East Java	14,056.79	0.00%
6	Government of West Java	2,319,044.49	0.65%
7	Dinas Pemberdayaan, Perlindungan Anak, dan Pengendalian Penduduk (PPAPP) Provinsi DKI Jakarta	14,794.74	0.00%
Local/municipal governments			
8	Government of Kota Tangerang	21,340.44	0.01%
9	Government of Kabupaten Tangerang	820.85	0.00%
10	Dinas Pemberdayaan Perempuan, Perlindungan Anak, dan Keluarga Berencana (DP3AKB) Kabupaten Sidoarjo	0	0.00%
Grand Total		355,471,124.88	100%

2. Family planning expenditures by financing agents in 2020

No.	Financing Agent (FA)	Value (USD)	% of Total
Ministry of Health			
1	Ministry of Health	193,365.20	0.05%
Ministry of Finance			
2	Ministry of Finance	149,908,423.34	42.17%
Other Ministries (or equivalent sector entities)*			
3	Coordinating Ministry for Human Development and Cultural Affairs	15,768.72	0.00%
4	Ministry of Interior	12,440.26	0.00%
5	Ministry of National Development Planning/Bappenas	36,429.16	0.01%
6	National Population & Family Planning Board/BKKBN	202,103,146.88	56.86%
State / Province / Department			
7	Dinas Pemberdayaan, Perlindungan Anak, dan Pengendalian Penduduk (PPAPP) Provinsi DKI Jakarta	103,839.25	0.03%
8	Government of West Java	2,319,044.49	0.65%
10	National Population & Family Planning Board/BKKBN Provinsi Jawa Tengah	119,831.21	0.03%
Other local/municipal entities not elsewhere classified (n.e.c.) and			
11	Dinas Pemberdayaan Perempuan, Perlindungan Anak, dan Keluarga Berencana (DP3AKB) Kabupaten Sidoarjo	224,908.63	0.06%
12	Dinas Pemberdayaan Perempuan, Perlindungan Anak, Pengendalian Penduduk dan Keluarga Berencana (DP3AP2KB) Kota Tangerang	21,340.44	0.01%
13	Dinas Pemberdayaan, Perlindungan Anak, dan Pengendalian Penduduk (PPAPP) Jakarta Pusat	14,794.74	0.00%
14	Dinas Pengendalian Penduduk dan Keluarga Berencana (DP2KB) Kabupaten Tangerang	820.85	0.00%
15	Government of Kota Semarang	395,539.35	0.11%
16	National Population & Family Planning Board/BKKBN of Serang	1,207.43	0.00%
17	National Population & Family Planning Board/BKKBN of Sub-district Tigaraksa	224.93	0.00%
Grand Total		355,471,124.88	100%

3. Family planning expenditures by types of provider in 2020

No.	Service Provider (PS)	Value (USD)	% of Total
Public general hospitals			
1	RSUD/RSUK	797.03	0.00%
2	Rumah Sakit Umum Daerah (RSUD) Balaraja	25,511.60	0.01%
3	Rumah Sakit Umum Daerah (RSUD) Banten	1,207.43	0.00%
4	Rumah Sakit Umum Daerah (RSUD) Kabupaten Tangerang	224.93	0.00%
5	Rumah Sakit Umum Daerah (RSUD) Tugurejo	286.76	0.00%
6	Rumah Sakit Umum Pusat (RSUP) Dr. Kariadi	11,800.11	0.00%
7	Rumah Sakit Umum Daerah (RSUD) Sidoarjo	3,234.47	0.00%
8	Rumah Sakit Umum Daerah (RSUD) Bhakti DH	2,565.69	0.00%
Public health centers			
9	Puskesmas	235,036.99	0.07%
National Family Planning Agency			
10	National Population & Family Planning Board/BKKBN	204,422,191.37	57.51%
Departments inside the Ministry of Health			
11	Directorate of Family Health	168,674.44	0.05%
Other Ministries or Public Administration entities n.e.c			
12	Coordinating Ministry for Human Development and Cultural Affairs	15,768.72	0.00%
13	Dinas Pemberdayaan Perempuan, Perlindungan Anak, Pengendalian Penduduk dan Keluarga Berencana (DP3AP2KB) Kota Tangerang	21,340.44	0.01%
14	Dinas Pemberdayaan, Perlindungan Anak, dan Pengendalian Penduduk (PPAPP) Jakarta Pusat	103,839.25	0.03%
15	Dinas Pengendalian Penduduk & Keluarga Berencana Kota Semarang	497,483.53	0.14%
16	Ministry of Interior	12,440.26	0.00%
17	Ministry of National Development Planning/Bappenas	36,429.16	0.01%
18	Province & local governments	1,346,205.00	0.38%
19	Province governments	798,797.83	0.22%
Public health posts/ dispensaries			
20	Bidan Swasta/Klinik	951.06	0.00%
Public providers not elsewhere classified			
21	Government of Kabupaten Aceh Barat	381,619.06	0.11%
22	Government of Kabupaten Aceh Barat Daya	251,171.76	0.07%
23	Government of Kabupaten Aceh Besar	497,553.12	0.14%
24	Government of Kabupaten Aceh Jaya	187,417.69	0.05%
25	Government of Kabupaten Aceh Selatan	427,463.52	0.12%
26	Government of Kabupaten Aceh Singkil	263,812.82	0.07%
27	Government of Kabupaten Aceh Tamiang	330,407.55	0.09%

28	Government of Kabupaten Aceh Tengah	400,075.87	0.11%
29	Government of Kabupaten Aceh Tenggara	402,384.39	0.11%
30	Government of Kabupaten Aceh Timur	560,828.83	0.16%
31	Government of Kabupaten Aceh Utara	736,057.19	0.21%
32	Government of Kabupaten Agam	255,685.26	0.07%
33	Government of Kabupaten Alor	340,805.26	0.10%
34	Government of Kabupaten Asahan	388,642.04	0.11%
35	Government of Kabupaten Asmat	251,860.50	0.07%
36	Government of Kabupaten Badung	29,779.02	0.01%
37	Government of Kabupaten Balangan	179,513.57	0.05%
38	Government of Kabupaten Bandung	695,190.89	0.20%
39	Government of Kabupaten Bandung Barat	434,821.57	0.12%
40	Government of Kabupaten Banggai	511,313.74	0.14%
41	Government of Kabupaten Banggai Kepulauan	316,230.47	0.09%
42	Government of Kabupaten Banggai Laut	70,029.80	0.02%
43	Government of Kabupaten Bangka	263,486.17	0.07%
44	Government of Kabupaten Bangka Barat	198,622.50	0.06%
45	Government of Kabupaten Bangka Selatan	181,572.18	0.05%
46	Government of Kabupaten Bangka Tengah	117,310.61	0.03%
47	Government of Kabupaten Bangkalan	377,875.85	0.11%
48	Government of Kabupaten Bangli	107,116.32	0.03%
49	Government of Kabupaten Banjar	429,702.74	0.12%
50	Government of Kabupaten Banjarnegara	446,408.95	0.13%
51	Government of Kabupaten Bantaeng	208,047.10	0.06%
52	Government of Kabupaten Bantul	336,426.24	0.09%
53	Government of Kabupaten Banyuasin	508,706.10	0.14%
54	Government of Kabupaten Banyumas	289,971.43	0.08%
55	Government of Kabupaten Banyuwangi	237,152.18	0.07%
56	Government of Kabupaten Barito Kuala	382,274.82	0.11%
57	Government of Kabupaten Barito Selatan	167,767.69	0.05%
58	Government of Kabupaten Barito Timur	280,231.39	0.08%
59	Government of Kabupaten Barito Utara	109,648.54	0.03%
60	Government of Kabupaten Barru	123,887.88	0.03%
61	Government of Kabupaten Batang	432,330.46	0.12%
62	Government of Kabupaten Batang hari	158,054.83	0.04%
63	Government of Kabupaten Batanghari	62,065.89	0.02%
64	Government of Kabupaten Batu Bara	227,473.59	0.06%
65	Government of Kabupaten Bekasi	177,776.85	0.05%
66	Government of Kabupaten Belitung	93,731.59	0.03%
67	Government of Kabupaten Belitung Timur	128,492.64	0.04%
68	Government of Kabupaten Belu	319,369.34	0.09%
69	Government of Kabupaten Bener Meriah	359,956.40	0.10%
70	Government of Kabupaten Bengkalis	229,232.52	0.06%
71	Government of Kabupaten Bengkayang	363,323.91	0.10%
72	Government of Kabupaten Bengkulu Selatan	310,437.75	0.09%
73	Government of Kabupaten Bengkulu Tengah	296,245.67	0.08%

74	Government of Kabupaten Bengkulu Utara	294,190.45	0.08%
75	Government of Kabupaten Berau	195,718.83	0.06%
76	Government of Kabupaten Biak Numfor	548,460.58	0.15%
77	Government of Kabupaten Bima	487,341.66	0.14%
78	Government of Kabupaten Bintan	111,788.44	0.03%
79	Government of Kabupaten Bireuen	586,960.88	0.17%
80	Government of Kabupaten Blitar	417,089.80	0.12%
81	Government of Kabupaten Blora	441,785.74	0.12%
82	Government of Kabupaten Boalemo	259,863.89	0.07%
83	Government of Kabupaten Bogor	643,964.04	0.18%
84	Government of Kabupaten Bojonegoro	548,645.19	0.15%
85	Government of Kabupaten Bolaang Mongondow	212,139.84	0.06%
86	Government of Kabupaten Bolaang Mongondow Selatan	226,680.02	0.06%
87	Government of Kabupaten Bolaang Mongondow Timur	135,693.68	0.04%
88	Government of Kabupaten Bolaang Mongondow Utara	248,286.69	0.07%
89	Government of Kabupaten Bombana	385,287.81	0.11%
90	Government of Kabupaten Bondowoso	290,218.31	0.08%
91	Government of Kabupaten Bone	640,011.27	0.18%
92	Government of Kabupaten Bone Bolango	380,371.12	0.11%
93	Government of Kabupaten Boven Digoel	358,904.32	0.10%
94	Government of Kabupaten Boyolali	269,014.08	0.08%
95	Government of Kabupaten Brebes	434,895.32	0.12%
96	Government of Kabupaten Buleleng	152,272.48	0.04%
97	Government of Kabupaten Bulukumba	187,578.68	0.05%
98	Government of Kabupaten Bulungan	191,432.44	0.05%
99	Government of Kabupaten Bungo	250,752.62	0.07%
100	Government of Kabupaten Buol	276,237.42	0.08%
101	Government of Kabupaten Buru	244,623.29	0.07%
102	Government of Kabupaten Buru Selatan	230,929.50	0.06%
103	Government of Kabupaten Buton	285,153.06	0.08%
104	Government of Kabupaten Buton Selatan	260,848.05	0.07%
105	Government of Kabupaten Buton Tengah	221,365.59	0.06%
106	Government of Kabupaten Buton Utara	206,397.07	0.06%
107	Government of Kabupaten Ciamis	598,237.78	0.17%
108	Government of Kabupaten Cianjur	681,554.43	0.19%
109	Government of Kabupaten Cilacap	499,875.32	0.14%
110	Government of Kabupaten Cirebon	648,812.09	0.18%
111	Government of Kabupaten Dairi	168,591.57	0.05%
112	Government of Kabupaten Deiyai	232,902.66	0.07%
113	Government of Kabupaten Deli Serdang	478,557.84	0.13%
114	Government of Kabupaten Demak	373,360.08	0.11%
115	Government of Kabupaten Dharmasraya	246,393.19	0.07%
116	Government of Kabupaten Dogiyai	231,215.07	0.07%

117	Government of Kabupaten Dompu	305,732.01	0.09%
118	Government of Kabupaten Donggala	371,858.77	0.10%
119	Government of Kabupaten Empat Lawang	257,511.39	0.07%
120	Government of Kabupaten Ende	485,162.93	0.14%
121	Government of Kabupaten Enrekang	210,018.94	0.06%
122	Government of Kabupaten Fak Fak	279,475.94	0.08%
123	Government of Kabupaten FakFak	49,384.80	0.01%
124	Government of Kabupaten Flores Timur	372,996.33	0.10%
125	Government of Kabupaten Garut	911,898.31	0.26%
126	Government of Kabupaten Gayo Lues	292,404.79	0.08%
127	Government of Kabupaten Gianyar	57,174.95	0.02%
128	Government of Kabupaten Gorontalo	418,495.47	0.12%
129	Government of Kabupaten Gorontalo Utara	227,724.02	0.06%
130	Government of Kabupaten Gowa	413,703.58	0.12%
131	Government of Kabupaten Gresik	349,198.18	0.10%
132	Government of Kabupaten Grobogan	428,932.41	0.12%
133	Government of Kabupaten Gunung Kidul	407,449.29	0.11%
134	Government of Kabupaten Gunung Mas	183,754.66	0.05%
135	Government of Kabupaten Halmahera Barat	306,633.26	0.09%
136	Government of Kabupaten Halmahera Selatan	654,342.59	0.18%
137	Government of Kabupaten Halmahera Tengah	327,882.78	0.09%
138	Government of Kabupaten Halmahera Timur	339,524.20	0.10%
139	Government of Kabupaten Halmahera Utara	297,436.63	0.08%
140	Government of Kabupaten Hulu Sungai Selatan	216,835.43	0.06%
141	Government of Kabupaten Hulu Sungai Tengah	86,928.13	0.02%
142	Government of Kabupaten Hulu Sungai Utara	322,521.69	0.09%
143	Government of Kabupaten Humbang Hasundutan	268,692.59	0.08%
144	Government of Kabupaten Indragiri Hilir	244,687.86	0.07%
145	Government of Kabupaten Indragiri Hulu	256,278.49	0.07%
146	Government of Kabupaten Indramayu	496,558.79	0.14%
147	Government of Kabupaten Intan Jaya	172,645.35	0.05%
148	Government of Kabupaten Jayapura	291,899.61	0.08%
149	Government of Kabupaten Jayawijaya	560,058.55	0.16%
150	Government of Kabupaten Jember	87,256.19	0.02%
151	Government of Kabupaten Jembrana	58,480.71	0.02%
152	Government of Kabupaten Jenepono	299,127.21	0.08%
153	Government of Kabupaten Jepara	320,515.69	0.09%
154	Government of Kabupaten Jombang	305,090.76	0.09%
155	Government of Kabupaten Kaimana	242,358.73	0.07%
156	Government of Kabupaten Kampar	480,307.59	0.14%
157	Government of Kabupaten Kapuas	254,929.11	0.07%
158	Government of Kabupaten Kapuas Hulu	354,027.76	0.10%
159	Government of Kabupaten Karanganyar	307,545.07	0.09%
160	Government of Kabupaten Karangasem	148,921.47	0.04%
161	Government of Kabupaten Karawang	623,517.13	0.18%
162	Government of Kabupaten Karimun	70,297.96	0.02%

163	Government of Kabupaten Karo	88,262.23	0.02%
164	Government of Kabupaten Katingan	298,394.55	0.08%
165	Government of Kabupaten Kaur	372,139.31	0.10%
166	Government of Kabupaten Kayong Utara	86,953.26	0.02%
167	Government of Kabupaten Kebumen	595,726.28	0.17%
168	Government of Kabupaten Kediri	382,019.61	0.11%
169	Government of Kabupaten Keerom	235,849.01	0.07%
170	Government of Kabupaten Kendal	392,632.12	0.11%
171	Government of Kabupaten Kep. Siau Tagulandang Biaro	81,776.35	0.02%
172	Government of Kabupaten Kepahiang	223,574.06	0.06%
173	Government of Kabupaten Kepulauan Anambas	87,886.96	0.02%
174	Government of Kabupaten Kepulauan Aru	210,222.04	0.06%
175	Government of Kabupaten Kepulauan Mentawai	64,221.45	0.02%
176	Government of Kabupaten Kepulauan Meranti	164,824.07	0.05%
177	Government of Kabupaten Kepulauan Sangihe	339,420.91	0.10%
178	Government of Kabupaten Kepulauan Selayar	245,739.36	0.07%
179	Government of Kabupaten Kepulauan Sula	322,910.95	0.09%
180	Government of Kabupaten Kepulauan Talaud	287,154.72	0.08%
181	Government of Kabupaten Kepulauan Tanimbar	269,164.17	0.08%
182	Government of Kabupaten Kepulauan Yapen	386,384.29	0.11%
183	Government of Kabupaten Kerinci	465,233.55	0.13%
184	Government of Kabupaten Ketapang	467,178.47	0.13%
185	Government of Kabupaten Klaten	414,944.15	0.12%
186	Government of Kabupaten Klungkung	70,460.38	0.02%
187	Government of Kabupaten Kolaka	354,883.86	0.10%
188	Government of Kabupaten Kolaka Timur	265,002.26	0.07%
189	Government of Kabupaten Kolaka Utara	266,599.87	0.07%
190	Government of Kabupaten Konawe	604,227.10	0.17%
191	Government of Kabupaten Konawe Kepulauan	202,545.66	0.06%
192	Government of Kabupaten Konawe Selatan	454,877.83	0.13%
193	Government of Kabupaten Konawe Utara	301,493.40	0.08%
194	Government of Kabupaten Kotabaru	350,239.67	0.10%
195	Government of Kabupaten Kotawaringin Barat	193,499.76	0.05%
196	Government of Kabupaten Kotawaringin Timur	283,130.83	0.08%
197	Government of Kabupaten Kuantan Singingi	196,082.95	0.06%
198	Government of Kabupaten Kubu Raya	232,640.24	0.07%
199	Government of Kabupaten Kudus	205,749.33	0.06%
200	Government of Kabupaten Kulon Progo	235,998.90	0.07%
201	Government of Kabupaten Kuningan	531,664.40	0.15%
202	Government of Kabupaten Kupang	384,584.41	0.11%
203	Government of Kabupaten Kutai Barat	287,374.42	0.08%
204	Government of Kabupaten Kutai Kartanegara	282,836.21	0.08%
205	Government of Kabupaten Kutai Timur	252,868.10	0.07%
206	Government of Kabupaten Labuhanbatu	246,476.22	0.07%
207	Government of Kabupaten Labuhanbatu Selatan	168,574.77	0.05%

208	Government of Kabupaten Labuhanbatu Utara	203,150.72	0.06%
209	Government of Kabupaten Lahat	453,686.25	0.13%
210	Government of Kabupaten Lamandau	198,321.50	0.06%
211	Government of Kabupaten Lamongan	635,041.50	0.18%
212	Government of Kabupaten Lampung Barat	336,258.45	0.09%
213	Government of Kabupaten Lampung Selatan	375,681.37	0.11%
214	Government of Kabupaten Lampung Tengah	270,767.65	0.08%
215	Government of Kabupaten Lampung Timur	462,678.94	0.13%
216	Government of Kabupaten Lampung Utara	450,744.41	0.13%
217	Government of Kabupaten Landak	357,707.85	0.10%
218	Government of Kabupaten Langkat	564,338.19	0.16%
219	Government of Kabupaten Lanny Jaya	550,146.56	0.15%
220	Government of Kabupaten Lebak	672,985.40	0.19%
221	Government of Kabupaten Lebong	272,622.15	0.08%
222	Government of Kabupaten Lembata	324,357.05	0.09%
223	Government of Kabupaten Limapuluh Kota	275,445.00	0.08%
224	Government of Kabupaten Lingga	182,988.97	0.05%
225	Government of Kabupaten Lombok Barat	332,101.46	0.09%
226	Government of Kabupaten Lombok Tengah	324,464.26	0.09%
227	Government of Kabupaten Lombok Timur	483,225.09	0.14%
228	Government of Kabupaten Lombok Utara	212,802.72	0.06%
229	Government of Kabupaten Lumajang	248,920.95	0.07%
230	Government of Kabupaten Luwu	251,053.90	0.07%
231	Government of Kabupaten Luwu Timur	216,733.89	0.06%
232	Government of Kabupaten Luwu Utara	321,819.47	0.09%
233	Government of Kabupaten Madiun	341,350.11	0.10%
234	Government of Kabupaten Magelang	373,930.02	0.11%
235	Government of Kabupaten Magetan	375,821.48	0.11%
236	Government of Kabupaten Mahakam Ulu	122,947.93	0.03%
237	Government of Kabupaten Majalengka	599,951.99	0.17%
238	Government of Kabupaten Majene	281,963.80	0.08%
239	Government of Kabupaten Malaka	190,578.57	0.05%
240	Government of Kabupaten Malang	704,940.66	0.20%
241	Government of Kabupaten Malinau	201,991.80	0.06%
242	Government of Kabupaten Maluku Barat Daya	319,517.41	0.09%
243	Government of Kabupaten Maluku Tengah	327,286.51	0.09%
244	Government of Kabupaten Maluku Tenggara	298,268.56	0.08%
245	Government of Kabupaten Mamasa	450,618.97	0.13%
246	Government of Kabupaten Mamberamo Raya	214,010.12	0.06%
247	Government of Kabupaten Mamberamo Tengah	190,997.97	0.05%
248	Government of Kabupaten Mamuju	337,266.14	0.09%
249	Government of Kabupaten Mamuju Tengah	211,211.16	0.06%
250	Government of Kabupaten Mandailing Natal	572,034.40	0.16%
251	Government of Kabupaten Manggarai	268,336.14	0.08%
252	Government of Kabupaten Manggarai Barat	346,815.74	0.10%
253	Government of Kabupaten Manggarai Timur	268,276.64	0.08%

254	Government of Kabupaten Manokwari	114,560.38	0.03%
255	Government of Kabupaten Manokwari Selatan	80,557.29	0.02%
256	Government of Kabupaten Mappi	366,715.41	0.10%
257	Government of Kabupaten Maros	195,986.01	0.06%
258	Government of Kabupaten Maybrat	377,268.88	0.11%
259	Government of Kabupaten Melawi	237,636.98	0.07%
260	Government of Kabupaten Mempawah	112,115.64	0.03%
261	Government of Kabupaten Merangin	533,703.47	0.15%
262	Government of Kabupaten Merauke	367,521.72	0.10%
263	Government of Kabupaten Mesuji	191,833.89	0.05%
264	Government of Kabupaten Mimika	339,640.39	0.10%
265	Government of Kabupaten Minahasa	483,257.26	0.14%
266	Government of Kabupaten Minahasa Selatan	386,049.82	0.11%
267	Government of Kabupaten Minahasa Tenggara	214,802.74	0.06%
268	Government of Kabupaten Minahasa Utara	205,564.28	0.06%
269	Government of Kabupaten Mojokerto	464,937.09	0.13%
270	Government of Kabupaten Morowali	266,803.96	0.08%
271	Government of Kabupaten Morowali Utara	304,829.14	0.09%
272	Government of Kabupaten Muara Enim	316,356.78	0.09%
273	Government of Kabupaten Muaro Jambi	309,228.55	0.09%
274	Government of Kabupaten Mukomuko	221,541.54	0.06%
275	Government of Kabupaten Muna	531,541.68	0.15%
276	Government of Kabupaten Muna Barat	234,586.23	0.07%
277	Government of Kabupaten Murung Raya	193,136.34	0.05%
278	Government of Kabupaten Musi Banyuasin	385,974.95	0.11%
279	Government of Kabupaten Musi Rawas	345,821.24	0.10%
280	Government of Kabupaten Musi Rawas Utara	162,999.68	0.05%
281	Government of Kabupaten Nabire	288,392.72	0.08%
282	Government of Kabupaten Nagan Raya	354,449.92	0.10%
283	Government of Kabupaten Nagekeo	200,108.19	0.06%
284	Government of Kabupaten Natuna	190,799.21	0.05%
285	Government of Kabupaten Nduga	479,425.30	0.13%
286	Government of Kabupaten Ngada	305,355.79	0.09%
287	Government of Kabupaten Nganjuk	379,025.53	0.11%
288	Government of Kabupaten Ngawi	301,781.47	0.08%
289	Government of Kabupaten Nias	315,966.16	0.09%
290	Government of Kabupaten Nias Barat	200,347.13	0.06%
291	Government of Kabupaten Nias Selatan	360,773.38	0.10%
292	Government of Kabupaten Nias Utara	200,982.82	0.06%
293	Government of Kabupaten Nunukan	284,649.10	0.08%
294	Government of Kabupaten Ogan Ilir	428,003.53	0.12%
295	Government of Kabupaten Ogan Komering Ilir	354,371.10	0.10%
296	Government of Kabupaten Ogan Komering Ulu	203,421.46	0.06%
297	Government of Kabupaten Ogan Komering Ulu Selatan	445,022.64	0.13%

298	Government of Kabupaten Ogan Komering Ulu Timur	436,303.76	0.12%
299	Government of Kabupaten Pacitan	250,648.27	0.07%
300	Government of Kabupaten Padang Lawas	390,238.26	0.11%
301	Government of Kabupaten Padang Lawas Utara	429,340.41	0.12%
302	Government of Kabupaten Padang Pariaman	240,611.85	0.07%
303	Government of Kabupaten Pakpak Bharat	111,102.64	0.03%
304	Government of Kabupaten Pamekasan	350,481.53	0.10%
305	Government of Kabupaten Pandeglang	706,697.88	0.20%
306	Government of Kabupaten Pangandaran	231,699.87	0.07%
307	Government of Kabupaten Pangkajene dan Kepulauan	328,420.83	0.09%
308	Government of Kabupaten Paniai	538,966.27	0.15%
309	Government of Kabupaten Parigi Moutong	550,839.24	0.15%
310	Government of Kabupaten Pasaman	264,348.45	0.07%
311	Government of Kabupaten Pasaman Barat	135,385.76	0.04%
312	Government of Kabupaten Pasangkayu	293,968.26	0.08%
313	Government of Kabupaten Paser	163,674.10	0.05%
314	Government of Kabupaten Pasuruan	227,291.07	0.06%
315	Government of Kabupaten Pati	510,677.27	0.14%
316	Government of Kabupaten Pegunungan Arfak	216,007.35	0.06%
317	Government of Kabupaten Pegunungan Bintang	415,229.91	0.12%
318	Government of Kabupaten Pekalongan	334,686.90	0.09%
319	Government of Kabupaten Pelalawan	241,108.41	0.07%
320	Government of Kabupaten Pemalang	391,227.03	0.11%
321	Government of Kabupaten Penajam Paser Utara	167,210.60	0.05%
322	Government of Kabupaten Penukal Abab Lematang Ilir	202,779.54	0.06%
323	Government of Kabupaten Pesawaran	270,643.24	0.08%
324	Government of Kabupaten Pesisir Barat	243,101.34	0.07%
325	Government of Kabupaten Pesisir Selatan	262,149.28	0.07%
326	Government of Kabupaten Pidie	677,099.56	0.19%
327	Government of Kabupaten Pidie Jaya	237,396.91	0.07%
328	Government of Kabupaten Pinrang	328,841.60	0.09%
329	Government of Kabupaten Pohuwato	314,560.07	0.09%
330	Government of Kabupaten Polewali Mandar	450,921.42	0.13%
331	Government of Kabupaten Ponorogo	408,256.13	0.11%
332	Government of Kabupaten Poso	394,653.04	0.11%
333	Government of Kabupaten Pringsewu	282,328.88	0.08%
334	Government of Kabupaten Probolinggo	474,152.60	0.13%
335	Government of Kabupaten Pulang Pisau	190,699.69	0.05%
336	Government of Kabupaten Pulau Morotai	212,183.75	0.06%
337	Government of Kabupaten Pulau Taliabu	228,364.70	0.06%
338	Government of Kabupaten Puncak	355,239.93	0.10%
339	Government of Kabupaten Puncak Jaya	500,953.90	0.14%
340	Government of Kabupaten Purbalingga	456,498.72	0.13%

341	Government of Kabupaten Purwakarta	303,340.61	0.09%
342	Government of Kabupaten Purworejo	493,322.30	0.14%
343	Government of Kabupaten Raja Ampat	390,366.72	0.11%
344	Government of Kabupaten Rejang Lebong	277,438.81	0.08%
345	Government of Kabupaten Rembang	353,814.73	0.10%
346	Government of Kabupaten Rokan Hilir	262,690.54	0.07%
347	Government of Kabupaten Rokan Hulu	291,296.96	0.08%
348	Government of Kabupaten Rote Ndao	253,177.31	0.07%
349	Government of Kabupaten Sabu Raijua	85,313.69	0.02%
350	Government of Kabupaten Sambas	469,491.70	0.13%
351	Government of Kabupaten Samosir	110,300.40	0.03%
352	Government of Kabupaten Sampang	338,524.90	0.10%
353	Government of Kabupaten Sanggau	295,084.39	0.08%
354	Government of Kabupaten Sarmi	293,854.31	0.08%
355	Government of Kabupaten Sarolangun	211,745.14	0.06%
356	Government of Kabupaten Sekadau	187,476.68	0.05%
357	Government of Kabupaten Seluma	257,353.70	0.07%
358	Government of Kabupaten Semarang	401,603.94	0.11%
359	Government of Kabupaten Seram Bagian Barat	299,682.73	0.08%
360	Government of Kabupaten Seram Bagian Timur	376,778.44	0.11%
361	Government of Kabupaten Serang	545,393.05	0.15%
362	Government of Kabupaten Serdang Bedagai	384,957.22	0.11%
363	Government of Kabupaten Seruyan	191,960.04	0.05%
364	Government of Kabupaten Siak	256,432.02	0.07%
365	Government of Kabupaten Sidenreng Rappang	235,548.12	0.07%
366	Government of Kabupaten Sidoarjo	243,611.17	0.07%
367	Government of Kabupaten Sigi	416,221.82	0.12%
368	Government of Kabupaten Sijunjung	178,029.10	0.05%
369	Government of Kabupaten Sikka	418,843.51	0.12%
370	Government of Kabupaten Simalungun	383,929.79	0.11%
371	Government of Kabupaten Simeulue	299,372.73	0.08%
372	Government of Kabupaten Sinjai	216,051.82	0.06%
373	Government of Kabupaten Sintang	446,742.18	0.13%
374	Government of Kabupaten Situbondo	354,424.07	0.10%
375	Government of Kabupaten Sleman	270,708.09	0.08%
376	Government of Kabupaten Solok	290,385.50	0.08%
377	Government of Kabupaten Solok Selatan	203,492.59	0.06%
378	Government of Kabupaten Soppeng	189,567.08	0.05%
379	Government of Kabupaten Sorong	579,028.92	0.16%
380	Government of Kabupaten Sorong Selatan	352,103.74	0.10%
381	Government of Kabupaten Sragen	430,486.62	0.12%
382	Government of Kabupaten Subang	520,981.47	0.15%
383	Government of Kabupaten Sukabumi	943,332.92	0.27%
384	Government of Kabupaten Sukamara	91,368.99	0.03%
385	Government of Kabupaten Sukoharjo	280,027.50	0.08%
386	Government of Kabupaten Sumba Barat	237,647.48	0.07%

387	Government of Kabupaten Sumba Barat Daya	271,009.03	0.08%
388	Government of Kabupaten Sumba Tengah	211,997.37	0.06%
389	Government of Kabupaten Sumba Timur	527,464.19	0.15%
390	Government of Kabupaten Sumbawa	547,958.84	0.15%
391	Government of Kabupaten Sumbawa Barat	244,902.54	0.07%
392	Government of Kabupaten Sumedang	581,932.42	0.16%
393	Government of Kabupaten Sumenep	434,718.74	0.12%
394	Government of Kabupaten Supiori	84,007.04	0.02%
395	Government of Kabupaten Tabalong	226,324.11	0.06%
396	Government of Kabupaten Tabanan	172,368.37	0.05%
397	Government of Kabupaten Takalar	239,203.79	0.07%
398	Government of Kabupaten Tambrau	490,905.27	0.14%
399	Government of Kabupaten Tana Tidung	111,704.45	0.03%
400	Government of Kabupaten Tana Toraja	193,119.15	0.05%
401	Government of Kabupaten Tanah Bumbu	307,197.35	0.09%
402	Government of Kabupaten Tanah Datar	187,720.29	0.05%
403	Government of Kabupaten Tanah Laut	213,655.46	0.06%
404	Government of Kabupaten Tangerang	540,827.98	0.15%
405	Government of Kabupaten Tanggamus	417,840.42	0.12%
406	Government of Kabupaten Tanjung Jabung Barat	309,777.70	0.09%
407	Government of Kabupaten Tanjung Jabung Timur	294,014.98	0.08%
408	Government of Kabupaten Tapanuli Selatan	264,797.98	0.07%
409	Government of Kabupaten Tapanuli Tengah	467,551.05	0.13%
410	Government of Kabupaten Tapanuli Utara	283,807.46	0.08%
411	Government of Kabupaten Tapin	284,748.98	0.08%
412	Government of Kabupaten Tasikmalaya	521,034.05	0.15%
413	Government of Kabupaten Tebo	220,290.80	0.06%
414	Government of Kabupaten Tegal	398,894.90	0.11%
415	Government of Kabupaten Teluk Bintuni	285,302.36	0.08%
416	Government of Kabupaten Teluk Wondama	339,545.41	0.10%
417	Government of Kabupaten Temanggung	323,870.58	0.09%
418	Government of Kabupaten Timor Tengah Selatan	500,905.37	0.14%
419	Government of Kabupaten Timor Tengah Utara	513,127.38	0.14%
420	Government of Kabupaten Toba Samosir	303,562.76	0.09%
421	Government of Kabupaten Tojo Una Una	235,755.72	0.07%
422	Government of Kabupaten Tojo Una-Una	101,593.08	0.03%
423	Government of Kabupaten Toli-toli	285,318.23	0.08%
424	Government of Kabupaten Tolikara	731,735.73	0.21%
425	Government of Kabupaten Toraja Utara	253,063.56	0.07%
426	Government of Kabupaten Trenggalek	281,934.66	0.08%
427	Government of Kabupaten Tuban	433,749.73	0.12%
428	Government of Kabupaten Tulang Bawang	376,098.97	0.11%
429	Government of Kabupaten Tulang Bawang Barat	197,449.67	0.06%
430	Government of Kabupaten Tulungagung	295,106.75	0.08%
431	Government of Kabupaten Wajo	295,399.88	0.08%
432	Government of Kabupaten Wakatobi	282,727.16	0.08%

433	Government of Kabupaten Waropen	283,675.72	0.08%
434	Government of Kabupaten Way Kanan	307,472.74	0.09%
435	Government of Kabupaten Wonogiri	562,066.65	0.16%
436	Government of Kabupaten Wonosobo	380,000.42	0.11%
437	Government of Kabupaten Yahukimo	818,281.49	0.23%
438	Government of Kabupaten Yalimo	321,808.40	0.09%
439	Government of Kota Ambon	221,836.81	0.06%
440	Government of Kota Balikpapan	115,458.32	0.03%
441	Government of Kota Banda Aceh	206,720.33	0.06%
442	Government of Kota Bandar Lampung	117,140.45	0.03%
443	Government of Kota Bandung	255,598.05	0.07%
444	Government of Kota Banjar	162,153.29	0.05%
445	Government of Kota Banjarbaru	112,589.90	0.03%
446	Government of Kota Banjarmasin	147,215.70	0.04%
447	Government of Kota Batam	161,499.50	0.05%
448	Government of Kota Batu	54,664.14	0.02%
449	Government of Kota Bau-bau	211,283.21	0.06%
450	Government of Kota Bekasi	336,043.23	0.09%
451	Government of Kota Bengkulu	109,911.82	0.03%
452	Government of Kota Bima	180,428.06	0.05%
453	Government of Kota Binjai	136,931.96	0.04%
454	Government of Kota Bitung	144,093.09	0.04%
455	Government of Kota Blitar	119,205.24	0.03%
456	Government of Kota Bogor	138,036.21	0.04%
457	Government of Kota Bontang	151,934.13	0.04%
458	Government of Kota Bukit Tinggi	72,585.07	0.02%
459	Government of Kota Cilegon	191,864.64	0.05%
460	Government of Kota Cimahi	41,747.40	0.01%
461	Government of Kota Cirebon	88,692.37	0.02%
462	Government of Kota Denpasar	47,410.28	0.01%
463	Government of Kota Depok	201,697.59	0.06%
464	Government of Kota Dumai	138,188.89	0.04%
465	Government of Kota Gorontalo	169,723.60	0.05%
466	Government of Kota Gunungsitoli	195,896.16	0.06%
467	Government of Kota Jambi	260,447.78	0.07%
468	Government of Kota Jayapura	166,452.12	0.05%
469	Government of Kota Kediri	126,244.51	0.04%
470	Government of Kota Kendari	277,183.78	0.08%
471	Government of Kota Kotamobagu	122,355.77	0.03%
472	Government of Kota Kupang	212,597.97	0.06%
473	Government of Kota Langsa	161,720.97	0.05%
474	Government of Kota Lhokseumawe	134,704.76	0.04%
475	Government of Kota Lubuk Linggau	169,587.18	0.05%
476	Government of Kota Madiun	133,999.33	0.04%
477	Government of Kota Magelang	60,851.49	0.02%
478	Government of Kota Makassar	164,085.89	0.05%

479	Government of Kota Malang	123,437.84	0.03%
480	Government of Kota Manado	271,869.83	0.08%
481	Government of Kota Mataram	188,274.37	0.05%
482	Government of Kota Medan	120,594.81	0.03%
483	Government of Kota Metro	87,023.60	0.02%
484	Government of Kota Mojokerto	40,051.28	0.01%
485	Government of Kota Padang	185,695.34	0.05%
486	Government of Kota Padang Panjang	43,452.58	0.01%
487	Government of Kota Padang Sidempuan	148,720.80	0.04%
488	Government of Kota Pagar Alam	146,940.66	0.04%
489	Government of Kota Palangkaraya	132,099.34	0.04%
490	Government of Kota Palembang	240,949.06	0.07%
491	Government of Kota Palopo	174,337.04	0.05%
492	Government of Kota Palu	166,776.02	0.05%
493	Government of Kota Pangkal Pinang	142,908.99	0.04%
494	Government of Kota Pare-pare	49,163.16	0.01%
495	Government of Kota Parepare	38,576.40	0.01%
496	Government of Kota Pariaman	142,851.36	0.04%
497	Government of Kota Pasuruan	85,552.70	0.02%
498	Government of Kota Payakumbuh	99,275.15	0.03%
499	Government of Kota Pekanbaru	85,509.04	0.02%
500	Government of Kota Pekanbaru	213,041.55	0.06%
501	Government of Kota Pematang Siantar	212,918.07	0.06%
502	Government of Kota Pontianak	93,059.79	0.03%
503	Government of Kota Prabumulih	168,915.00	0.05%
504	Government of Kota Probolinggo	67,836.41	0.02%
505	Government of Kota Sabang	67,927.50	0.02%
506	Government of Kota Salatiga	85,624.80	0.02%
507	Government of Kota Samarinda	200,313.39	0.06%
508	Government of Kota Sawahlunto	78,021.62	0.02%
509	Government of Kota Semarang	383,486.71	0.11%
510	Government of Kota Serang	195,925.37	0.06%
511	Government of Kota Sibolga	72,768.38	0.02%
512	Government of Kota Singkawang	89,191.13	0.03%
513	Government of Kota Solok	98,674.72	0.03%
514	Government of Kota Sorong	221,007.53	0.06%
515	Government of Kota Subulussalam	182,465.18	0.05%
516	Government of Kota Sukabumi	138,889.68	0.04%
517	Government of Kota Sungai Penuh	165,303.30	0.05%
518	Government of Kota Surabaya	164,616.18	0.05%
519	Government of Kota Surakarta	144,197.50	0.04%
520	Government of Kota Tangerang	16,691.73	0.00%
521	Government of Kota Tangerang Selatan	145,866.50	0.04%
522	Government of Kota Tanjung Balai	123,104.46	0.03%
523	Government of Kota Tanjung Pinang	38,536.91	0.01%
524	Government of Kota Tarakan	101,603.19	0.03%

525	Government of Kota Tasikmalaya	247,492.21	0.07%
526	Government of Kota Tebing Tinggi	95,473.57	0.03%
527	Government of Kota Tegal	93,899.42	0.03%
528	Government of Kota Ternate	96,668.89	0.03%
529	Government of Kota Tidore Kepulauan	194,927.65	0.05%
530	Government of Kota Tomohon	149,576.33	0.04%
531	Government of Kota Tual	103,780.31	0.03%
532	Government of Kota Yogyakarta	161,003.24	0.05%
533	Government of Special Capital Region of Jakarta	17,775.65	0.01%
534	Lembaga/KKB	2,918.28	0.00%
Grand Total		355,471,124.86	100%

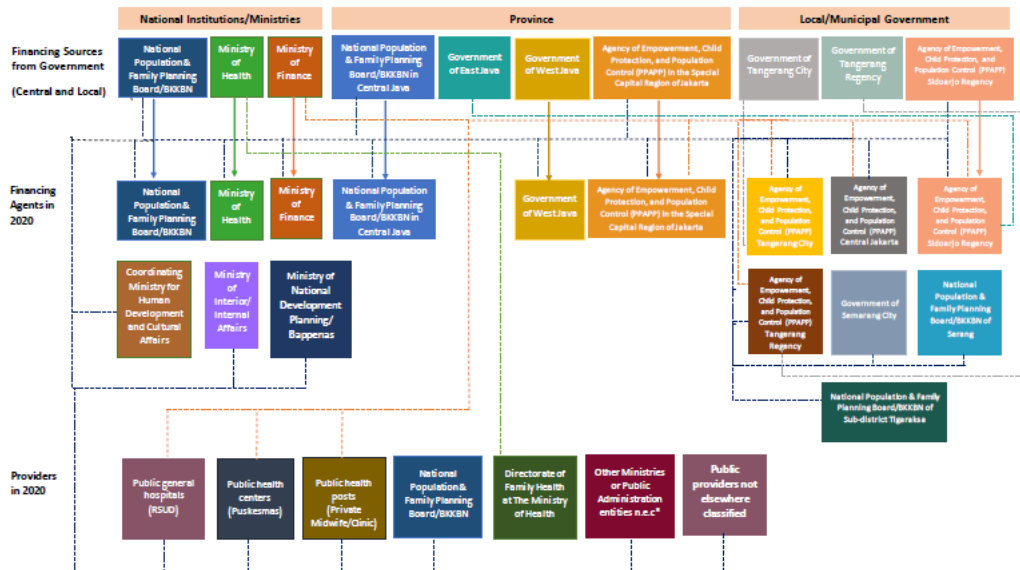
4. Family Planning Spending Categories (FPSC) in 2020

No.	Family Planning Spending Categories (FPSC)	Value (USD)	% of Total
1	Expenditure on staff providing FP services	224,908.63	0.06%
2	Male Sterilization	117.80	0.00%
3	Female Sterilization	563.76	0.00%
4	Others (Contraceptives/consumables not disaggregated by type)	380.82	0.00%
5	IUD	38,737.53	0.01%
6	Implants	136,465.95	0.04%
7	DMPA-IM	41,771.19	0.01%
8	Pills	7,303.76	0.00%
9	Condoms (male and female)	6,320.18	0.00%
10	Information, Education and Communication (IEC)	7,985,858.90	2.25%
11	Policy Development and Advocacy	402,561.54	0.11%
12	Management Information System (MIS) and Health Information System (HIS)	312,692.18	0.09%
13	Monitoring, Evaluation and Research	999,172.48	0.28%
14	Capacity building/training (for all categories mentioned above)	5,138,196.08	1.45%
15	Program Management	186,369,790.86	52.43%
16	Operational expenditures	120,884,091.15	34.01%
17	Other please specify	2,145,002.83	0.60%
18	Capital expenditure (technology, medical & non-medical equipment, construction & renovation) for FY and FP from funds/budget	30,777,189.24	8.66%
Grand Total		355,471,124.88	100%

5. Inputs/production factors/objects of expenditures in 2020

No.	Production Factor (PF)	Value (USD)	% of Total
1	Internal service staff cost (for direct service provision)	224,908.63	0.06%
2	Outsourcing of services	-	0.00%
3	Logistics/transportation	113,012,619.28	31.79%
4	Contraceptives, medicine & other consumables (retailed or provided)	231,660.99	0.07%
5	Information, education and communication	7,985,858.90	2.25%
6	Policy development and advocacy	401,758.73	0.11%
7	Management information system (MIS) and Health Information System	312,692.18	0.09%
8	Monitoring, Evaluation and Research	991,099.45	0.28%
9	Capacity building/training	5,135,138.73	1.44%
10	Program management	73,369,104.77	20.64%
11	Operational expenditures	120,884,091.15	34.01%
12	Other	32,922,192.07	9.26%
Grand Total		355,471,124.88	100%

6. Flow of Fund flows for family planning service from government



*Coordinating Ministry for Human Development and Cultural Affairs; Agency of Empowerment, Child Protection, and Population Control (PPAPP) Tangerang City; Agency of Empowerment, Child Protection, and Population Control (PPAPP) Central Jakarta; Agency of Population Control in Semarang City; Ministry of Interior; Ministry of National Development Planning/Bappenas; Province & local governments; Province governments

No. ———— : Derived from the primary source in the calculation of deliverables 1 and 2.
 - - - - - : Derived from secondary sources through a literature review**.